



**PRECISION
IN MOTION**

Global Solutions. Proven Performance.



AYIKA MAKİNA SAN. TİC. LTD.



Headquarters Address
Ferhatpaşa Mah. Akdeniz Cd. 44.Sk.
No:59 Ataşehir/İstanbul



Contact Information
Mail: info@bosporas.com
Phone: +90 544 633 42 11



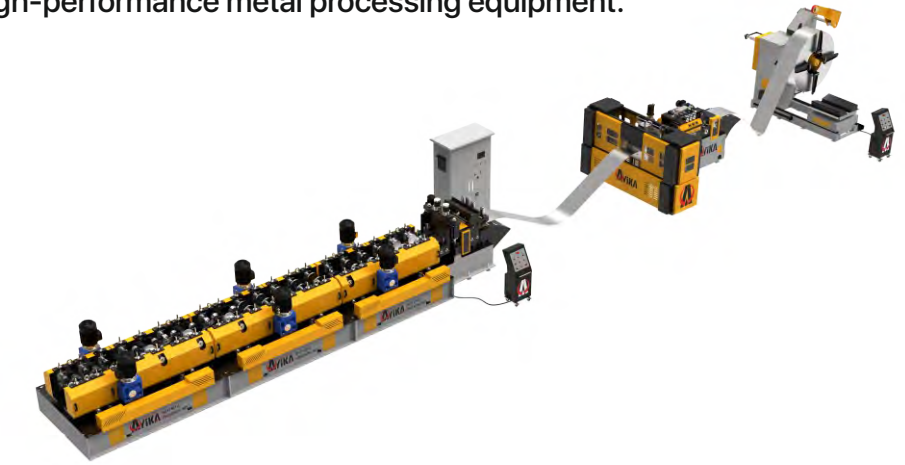


Our product range includes coil slitting lines, cut-to-length lines, roll forming lines, decoilers, straightening systems and compact press feeding solutions. In addition to standard machines, Ayika develops customized production lines tailored to specific customer requirements and industrial applications.



Today, Ayika Machinery is a trusted solution partner for manufacturers worldwide, with machines operating successfully across Europe, the Middle East and Asia

Ayika Machinery, is a leading manufacturer of coil and sheet metal processing lines based in Istanbul, Türkiye. With more than 20 years of industry experience, the company specializes in the design, engineering and manufacturing of high-performance metal processing equipment.



All machines are designed and manufactured in Ayika's modern production facility using advanced machining technologies and strict quality standards. Each system is thoroughly tested before delivery and complies with international standards including CE certification.

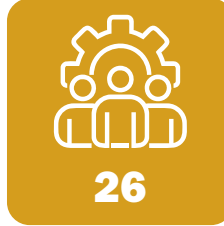




EXPERIENCE

Ayika Machinery has more than 20 years of experience in the sheet metal processing industry

20+
Years
Experience



TEAM

Our professional team consists of 26 engineers and technicians specialized in metal processing technologies.

GLOBAL EXPORTS

Ayika machines are successfully operating in more than 10 countries, with representatives and customers across Europe, the Middle East and Asia.

10+



PRODUCTION FACILITY

Production and R&D activities are carried out in our modern manufacturing facility located in Istanbul Dudullu Industrial Zone, with a total production area of 2500 m².

2500

SERVICE & SALES

Ayika provides 24/7 technical support and sales services to ensure continuous and reliable operation for our customers.

24/7



INTERNATIONAL SALES NETWORK

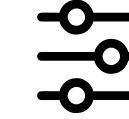
Bosporas machines are supplied to global markets through international sales representatives in 6 different regions worldwide.

6+



ENGINEERING-DRIVEN SOLUTIONS

Our machines are designed by experienced engineers with deep knowledge of metal processing technologies. From standard machines to fully customized production lines, Ayika develops solutions tailored to each customer's production requirements



CUSTOMIZED PRODUCTION LINES

Every manufacturing facility has unique needs. Our engineering team designs custom-built production lines optimized for different materials, production capacities and industry requirements.



GLOBAL EXPERIENCE

Ayika machines are successfully operating in multiple countries across Europe, the Middle East and Asia, supporting manufacturers in a wide range of industries.



COMPLETE COIL PROCESSING EXPERTISE

Ayika provides comprehensive solutions covering the entire coil processing workflow from decoiling and straightening to slitting, cut-to-length and roll forming production lines.



RELIABLE & INTERNATIONAL QUALITY

All Ayika machines are manufactured according to international quality standards, including ISO 9001 quality management systems and CE compliance, ensuring safe and reliable operation.



LONG-TERM PARTNERSHIP

Beyond machinery supply, Ayika focuses on building long-term partnerships by providing technical support, engineering consultancy and after-sales service to ensure continuous and efficient production.

Ayika manufactures its machines using advanced production technologies in its modern facilities located in Istanbul, Türkiye. With a strong engineering background and an experienced production team, Ayika ensures reliable and high-quality manufacturing processes at every stage of production.

Ayika operates three production facilities, consisting of two manufacturing plants and one assembly facility, with a total production area of 2,500 m².

Our production infrastructure includes modern CNC machining centers, turning and milling machines, and dedicated assembly lines, enabling precise manufacturing of critical machine components.

All components are produced and assembled with strict quality control procedures to ensure durability, precision, and long service life.

Each machine manufactured by Ayika is individually tested and inspected before delivery and prepared for shipment according to international quality standards.

Our integrated production structure allows us to efficiently manufacture and assemble coil processing lines and roll forming machines, ensuring consistent quality and reliable performance.

Ayika production facilities are organized to support efficient workflow, high production capacity, and continuous improvement in manufacturing technologies.



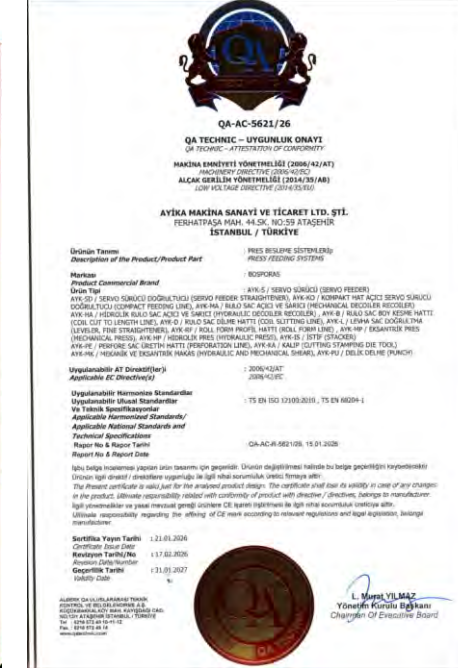
At Ayika Machinery, quality, safety and environmental responsibility are fundamental principles in all our operations.

Within the framework of total quality management, our production processes are carried out in accordance with ISO 9001:2015 Quality Management System standards, ensuring customer-focused and continuously improved manufacturing.

Ayika machines are designed and manufactured in compliance with CE standards, guaranteeing safety, reliability and international quality requirements.

In order to maintain high operational efficiency and product quality, Ayika utilizes an internally developed Production Tracking and Planning System, which enables effective control of production processes as well as coordination between manufacturing, sales and after-sales services.

Through these practices, Ayika Machinery continuously aims to deliver highquality, reliable and long-lasting machinery solutions to its customers worldwide.



MAIN PRODUCTS

Ayika Machinery offers a comprehensive range of coil and sheet metal processing solutions designed to meet the demands of modern manufacturing industries.

Our product portfolio covers the entire production process — from coil handling and straightening to slitting, cut-to-length and roll forming systems. With strong engineering capability and extensive industry experience, Ayika designs both standard machines and fully customized production lines according to customer requirements, material specifications and production capacities.

All systems are developed with robust mechanical structures, advanced engineering and intelligent automation technologies to ensure high productivity, operational reliability and long service life.

- Coil Slitting Lines
- Cut to Length Lines
- Roll Forming Lines
- Compact Press Feeding Systems
- Mechanical & Hydraulic Decoilers / Recoilers
- Straightening Servo Feeders
- Precision Straighteners & Levelers

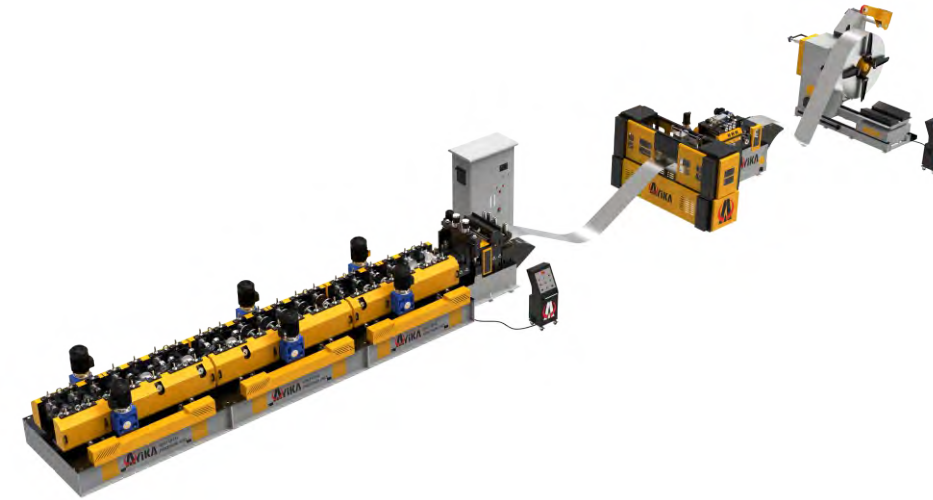


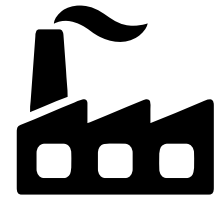
SPECIAL PRODUCTS

In addition to standard coil and sheet metal processing equipment, Ayika Machinery designs and manufactures specialized production lines for various industrial applications.

With advanced roll forming technologies and strong engineering capability, we develop customized solutions tailored to different sectors and production requirements. Our special production lines are designed to provide high efficiency, precise forming and reliable long-term performance in demanding industrial environments.

- Road Barrier & Guardrail Production Lines
- Acoustic / Noise Barrier Production Lines
- Cable Tray Production Lines
- Suspended Ceiling Production Lines
- Scaffolding Plank Production Lines
- U, C, Z Profile Production Lines
- Storage Rack & Shelving Systems Production Lines
- Shutter & Roller Shutter Production Lines
- Floor Grid & Platform Production Lines
- Perforation and Punching Lines





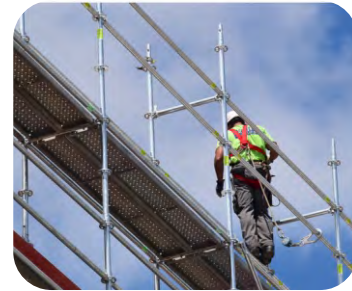
Ayika Machinery provides advanced coil and sheet metal processing solutions for a wide range of industries.

Thanks to our flexible engineering approach and customizable production lines, Ayika systems are successfully used in many industrial sectors where high-quality metal forming and reliable production processes are required.

Our machinery supports manufacturers in improving productivity, precision and operational efficiency across different industries.

Construction & Infrastructure

- Road safety systems (Guardrails & Road Barriers)
- Acoustic / Noise Barrier Systems
- Structural steel profiles
- Suspended ceiling systems
- Scaffolding and construction platforms
- Floor grating and industrial platforms



Electrical & Energy Infrastructure

- Cable tray and cable ladder systems
- Electrical support structures
- Energy infrastructure components
- Solar mounting system profiles



Storage & Logistics Systems

- Industrial racking systems
- Warehouse storage systems
- Market shelving systems
- Heavy duty shelving profiles



Metal Processing & Manufacturing

- Steel Service Centers
- Sheet Metal Processing Companies
- Automotive Component Manufacturing
- White Goods & Appliance Manufacturing
- HVAC and Ventilation Equipment Production
- Metal Furniture Manufacturing
- Industrial Equipment Manufacturing
- Construction Material Production
- Electrical Equipment Manufacturing
- General Sheet Metal Fabrication



Building & Industrial Systems

- Metal door and shutter systems
- Ventilation and HVAC components
- Metal façade and cladding systems
- Perforated sheet metal applications







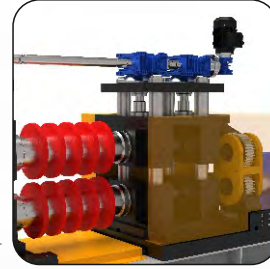
4-Ton Decoiler:

Designed for heavy-tonnage metal coils with its high-strength steel body and powerful gearbox system, the 4-ton decoiler operates with hydraulic mandrel clamping and expansion, providing safe handling and long service life. It is an ideal solution for industrial production lines.



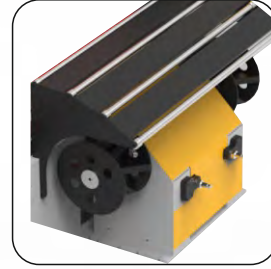
Straightening Unit:

Designed to ensure that the sheet metal uncoiled from the roll advances through the production line smoothly and without tension, the straightening unit prevents loss of form by removing slight twists and curls in the material, providing an ideal starting point for high-precision operations.



Slitting Unit:

It is a critical process unit that separates the main coil into strips of desired widths with high precision, increasing production efficiency through its cutting quality and dimensional repeatability.



Scrap Recoiler Unit:

An auxiliary unit that winds edge scraps generated during the slitting process in a safe and controlled manner, ensuring the line operates cleanly, continuously, and in compliance with operator safety standards.



Sheet Tensioner:

An integrated press and tensioning unit that provides tension control throughout the line while ensuring the sheet is formed into the desired shape; it offers a compact and efficient solution for high-precision operations. By maintaining material stability, it increases both quality and production speed.

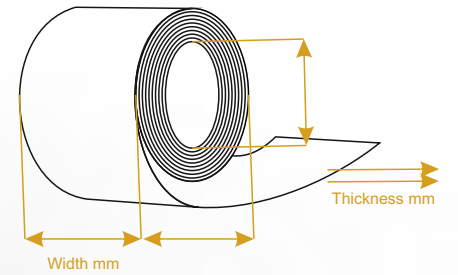
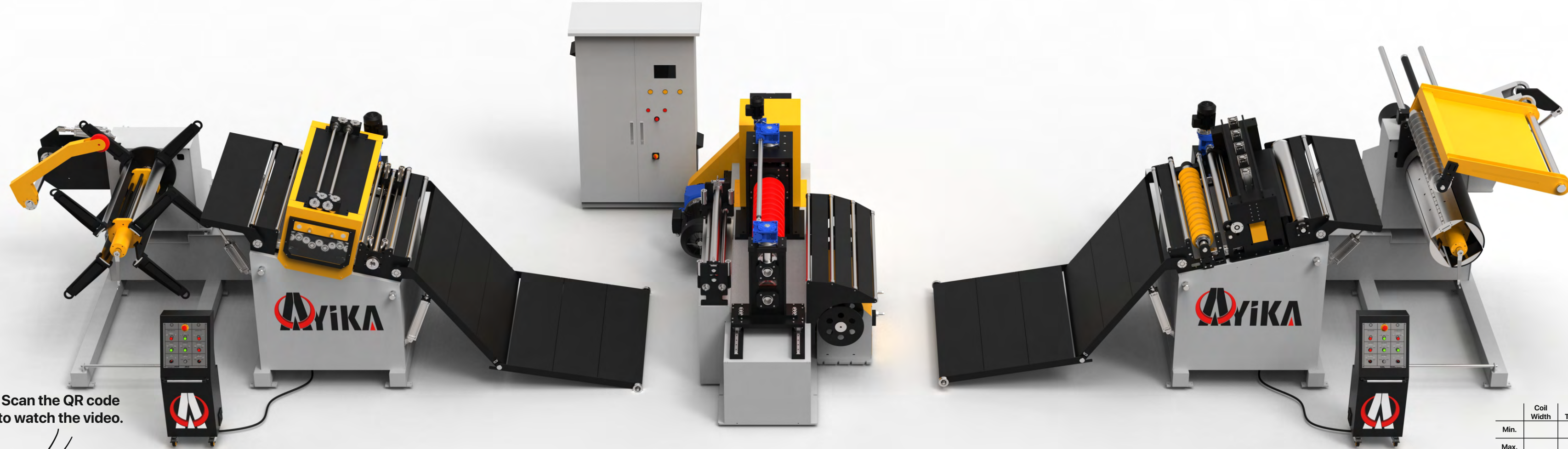


Recoiler:

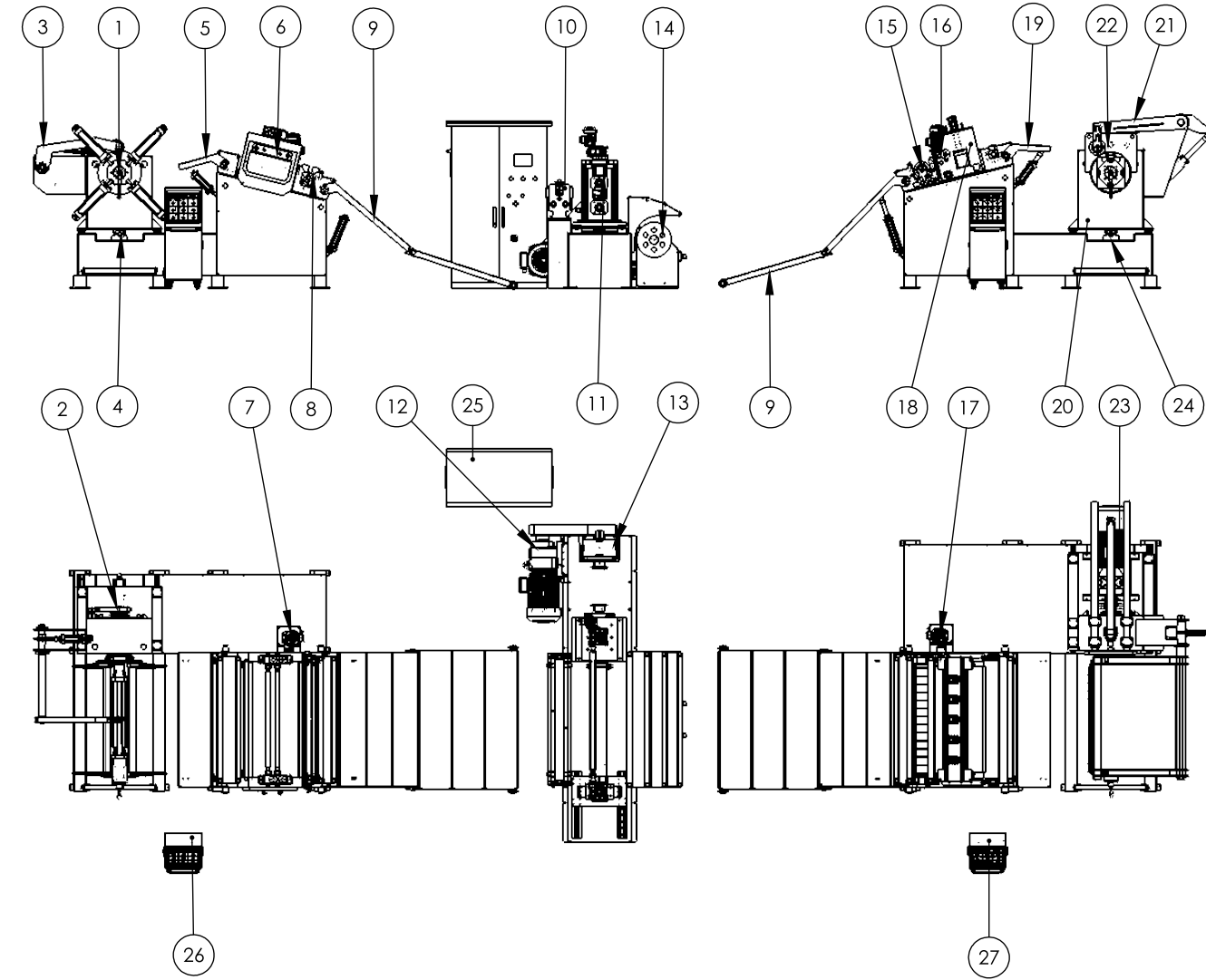
The recoiler unit, which ensures that the slitted sheets are rewound into rolls in a regular and tight manner, enables the efficient completion of the production line with its automatic winding control and robust structure.



Scan the QR code to watch the video.

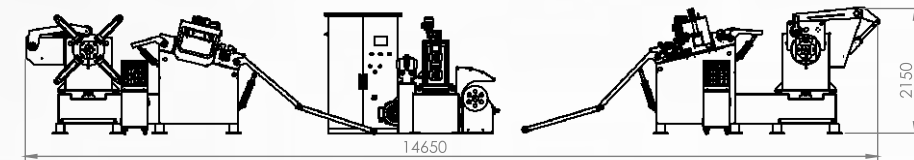


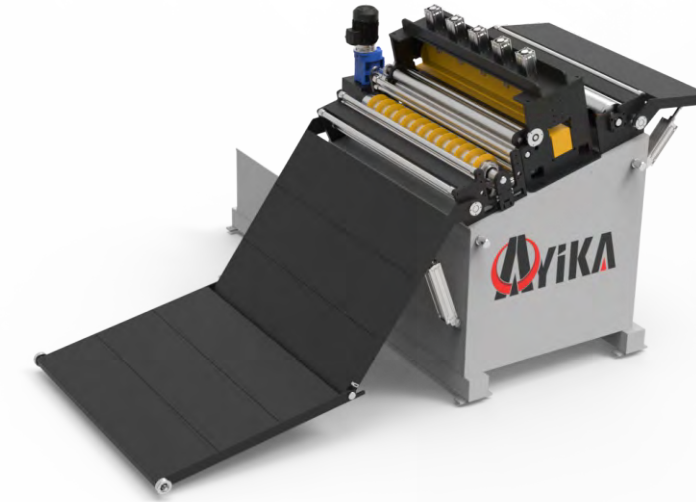
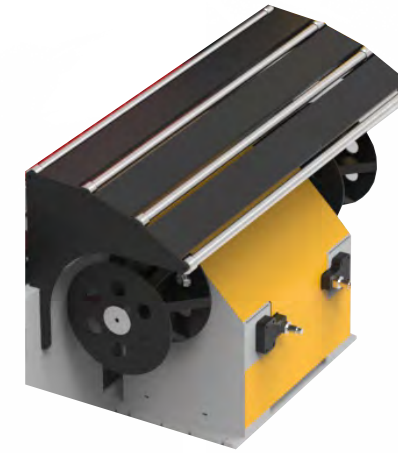
	Coil Width	Strip Thickness	Coil Weight	Entry Coil I.D.	Entry Coil O.D.	Line Speed	Number of Slitting
Min.							
Max.							



No	Part Information	Part Notes
1	Mechanical Decoller	4 Tons 1300mm / Inner Ø480-Ø530 / Max Coil Ø1000mm
2	Mechanical Decoller	Friction Brake System
3	Hold-down Arm	Pneumatic Mechanism
4	Coil Centering Guide	Mechanical System
5	Entry Guide Plate	Pneumatic Mechanism
6	Feeder	Ø85x7 Roller - 1300mm Width
7	Feeder Motor	2.2 kW Asynchronous Motor with Shaft Transmission
8	Guiding	Mechanical System
9	Oscillating Shovel	Pneumatic Mechanism
10	Slitting Entry Guiding	Mechanical System
11	Slitting Head	Interchangeable Blade System
12	Slitting Head Motor	30 kW Asynchronous Main Motor / 1.5 kW Blade Adjustment Motor
13	Slitting Head Gearbox	Shaft Transmission System
14	Scrap Recoiler	2.2 kW Asynchronous Motor with Shaft Drive
15	Separator Before Tensioner	Adjustable Mechanical System
16	Tensioner Entry Puller	Ø85x2 Roller - 1300 mm Width
17	Tensioner Pinch Rollers	2.2 kW Asynchronous Motor with Shaft Transmission
18	Tensioner Body	Pneumatic Piston Press System
19	Tensioner Exit Shovel	Pneumatic System
20	Mechanical Decoller	4 Tons 1300mm / Inner Ø530 / Max Coil Ø1000mm
21	Separator	Adjustable Hydraulic System
22	Coil Pusher	Hydraulic System
23	Mechanical Coil Recoiler Motor	30 kW Asynchronous Motor
24	Coil Centering	Mechanical System
25	Main Control Panel	
26	Control Panel	Mechanical Decoller / Feeder / Slitter
27	Control Panel	Tensioner / Recoiler

Sheet Thickness	Iron	Stainless Steel	Aluminum
0,3mm	10 pcs	-	-
0,5mm	8 pcs	-	-
1mm	6 pcs	-	-





General Specifications	Decoiler
Total Motor Power (kW)	-
Max. Speed	Friction Brake System
Sheet Thickness	0.3 - 1 mm
Max. Coil Width	1300 mm
Coil Weight Capacity	4 Ton
Coil Inner Diameter	480-530 mm
Coil Outer Diameter	1000 mm

General Specifications	Pinch Rollers
Total Motor Power (kW)	2,2 (kW)
Max. Speed	20 m/max.
Sheet Thickness	0.3 - 1 mm
Max. Coil Width	1300 mm
Pinch Rollers' Quantity	4
Roller Diameter	85 mm
Straightening Rollers' Quantity	7
Roller Diameter	85 mm

General Specifications	Slitting
Total Motor Power (kW)	30 (kW)
Max. Speed	20 m/max.
Sheet Thickness	0.3 - 1 mm
Max. Coil Width	1300 mm

Desired speed and power values may vary according to the specific order.

General Specifications	Scrap Recoiler
Total Motor Power (kW)	2,2 (kW)
Max. Speed	20 m/max.
Sheet Thickness	0.3 - 1 mm
Maximum Scrap Width	3 - 15 mm
Max. Coil Weight Capacity	100 kg

General Specifications	Sheet Tensioner
Total Motor Power (kW)	2,2 (kW)
Feed Rollers	85 mm
Sheet Thickness	0.3 - 1 mm
Max. Coil Width	1300 mm

General Specifications	Recoiler
Total Motor Power (kW)	30 (kW)
Min. / Max. Speed	10 m/min. - 20 m/max.
Sheet Thickness	0.3 - 1 mm
Max. Coil Width	1300 mm
Coil Weight Capacity	4 Ton
Coil Inner Diameter	508 mm
Coil Outer Diameter Max.	1000 mm

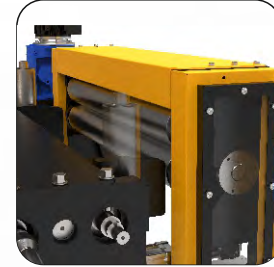
Desired speed and power values may vary according to the specific order.





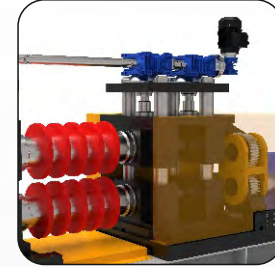
6-Ton Decoiler:

Designed for heavy-tonnage metal coils with its high-strength steel body and powerful gearbox system, the 6-ton decoiler operates with hydraulic mandrel clamping and expansion, providing safe handling and long service life. It is an ideal solution for industrial production lines.



Pinch Roller Unit:

It is used to guide the sheet metal coming from the decoiler into the slitting blades in a smooth and easy manner.



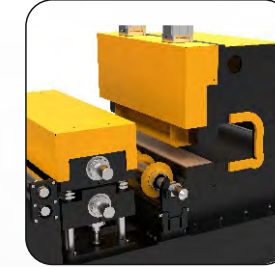
Slitting Unit:

It is a critical process unit that separates the main coil into strips of desired widths with high precision, increasing production efficiency through its cutting quality and dimensional repeatability.



Scrap Recoiler Unit:

An auxiliary unit that winds edge scraps generated during the slitting process in a safe and controlled manner, ensuring the line operates cleanly, continuously, and in compliance with operator safety standards.



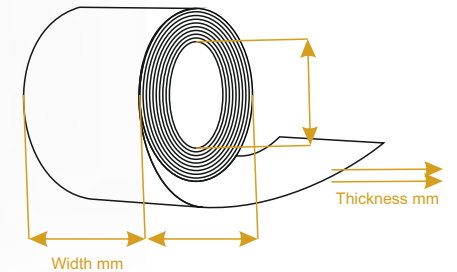
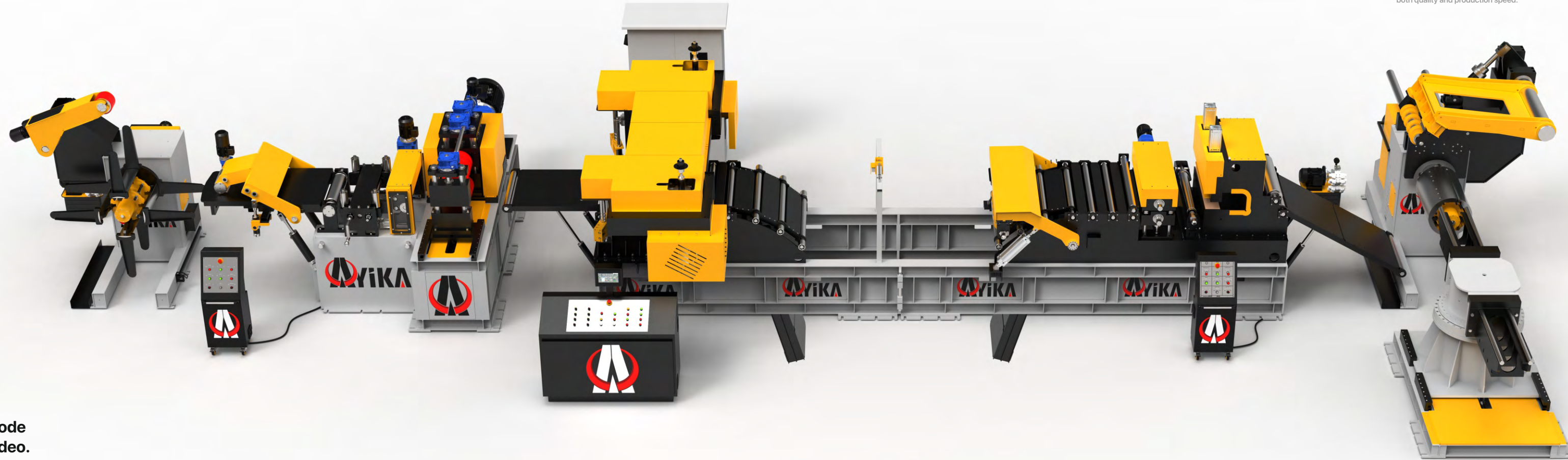
Sheet Tensioner:

An integrated press and tensioning unit that provides tension control throughout the line while ensuring the sheet is formed into the desired shape; it offers a compact and efficient solution for high-precision operations. By maintaining material stability, it increases both quality and production speed.



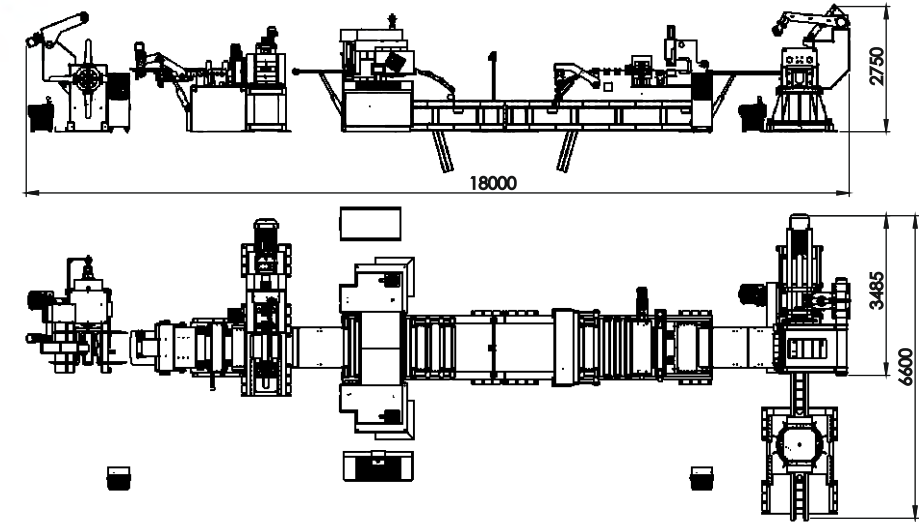
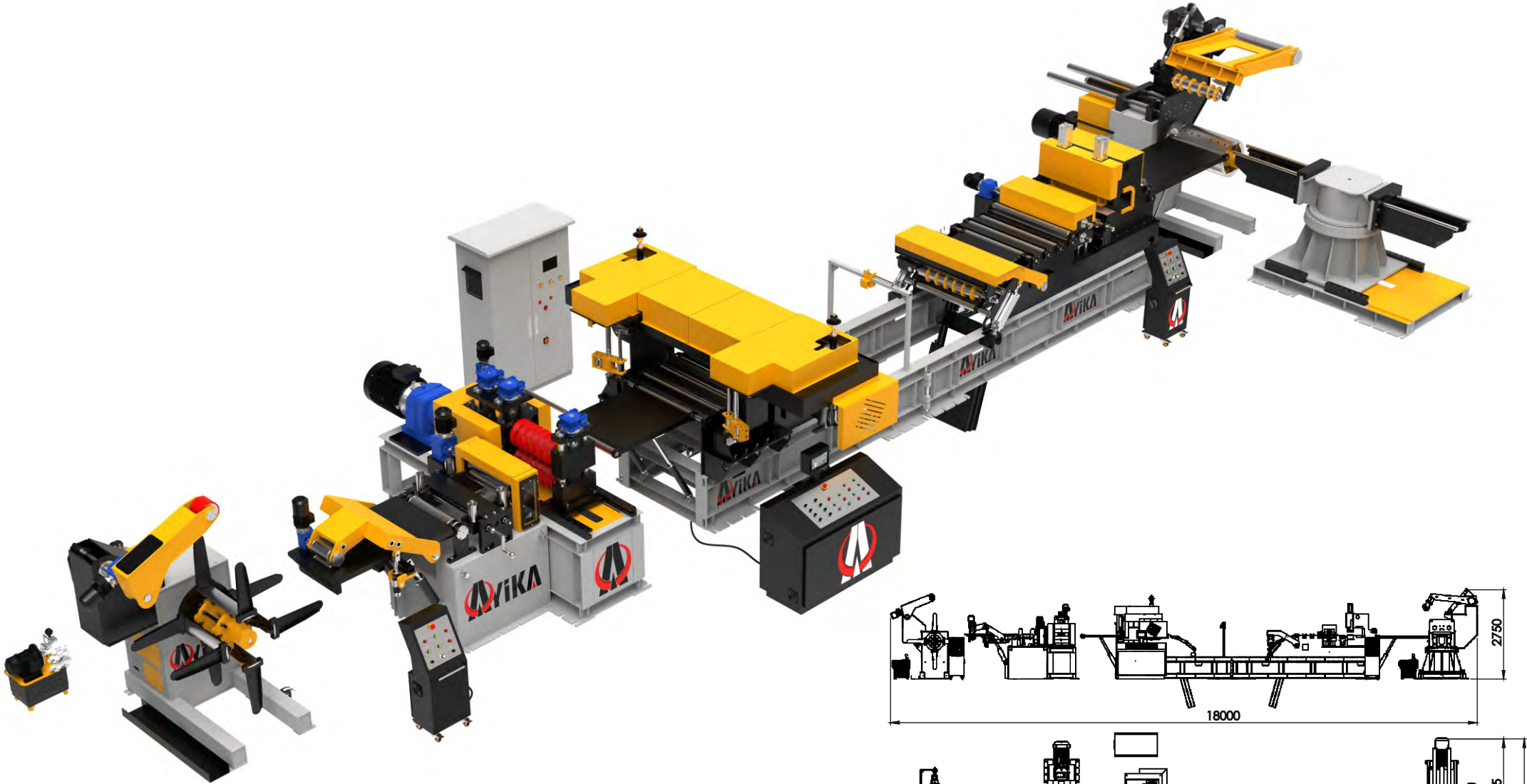
Recoiler:

The recoiler unit, which ensures that the slitted sheets are rewound into rolls in a regular and tight manner, enables the efficient completion of the production line with its automatic winding control and robust structure.



Scan the QR code to watch the video.

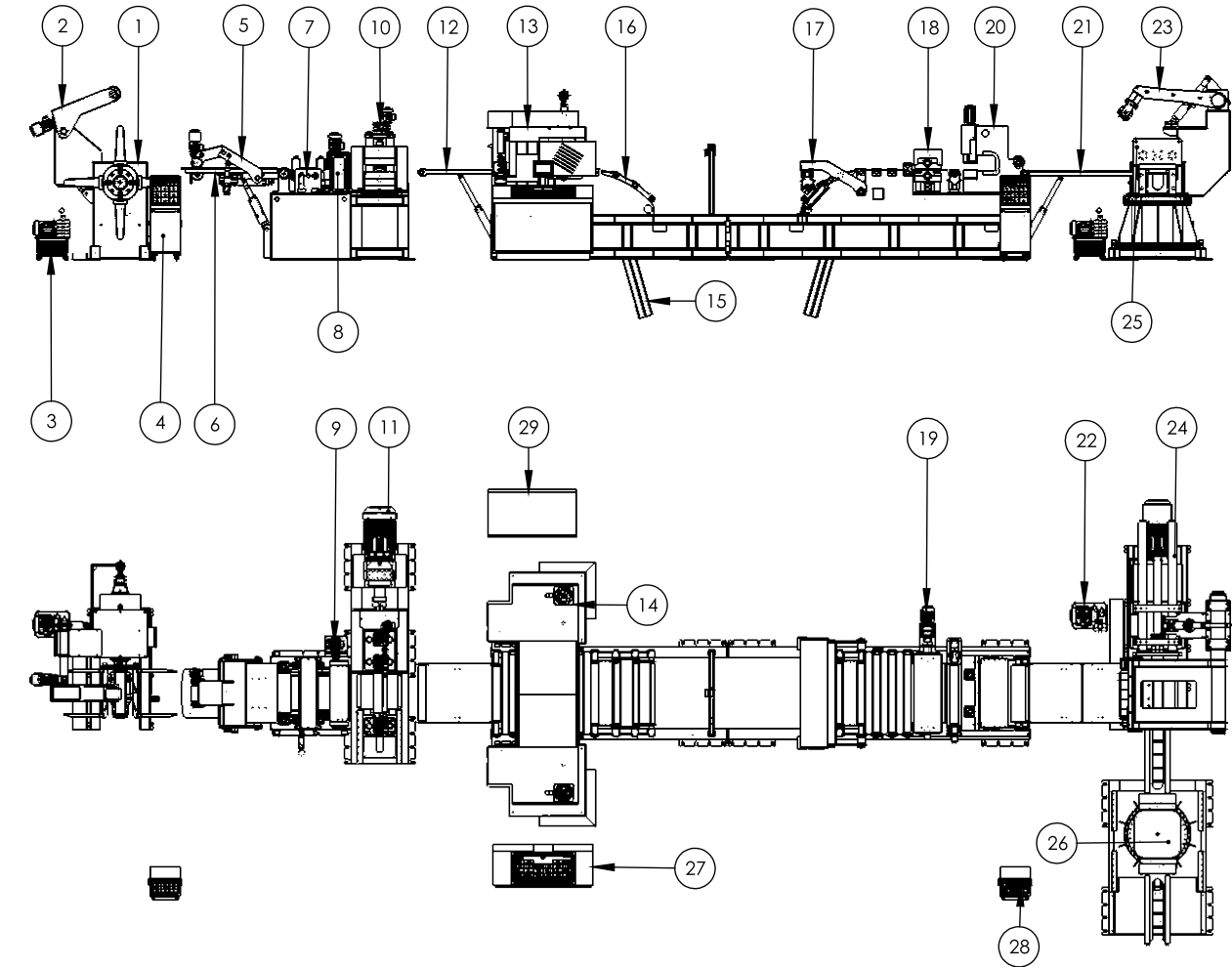
	Coil Width	Strip Thickness	Coil Weight	Entry Coil I.D.	Entry Coil O.D.	Line Speed	Number of Slitting
Min.							
Max.							



Sheet Thickness	Iron	Stainless Steel	Aluminum
0,5mm	20 pcs	18 pcs	25 pcs
1mm	16 pcs	12 pcs	20 pcs
2mm	14 pcs	8 pcs	18 pcs
3mm	8 pcs	4 pcs	12 pcs

Maximum number of cuts depending on material type.

Layout plans and concrete foundation dimensions must be prepared prior to installation.



No	Part Information	Part Notes
1	Hydraulic Decoiler	6 Tons 600 mm Ø480-Ø530 3 kW Asynchronous Motor / Max. Coil Ø1300
2	Hydraulic Snubber Arm	0.75 kW Asynchronous Motor Drive
3	Decoiler Hydraulic Unit	80 Liters / 5.5 kW Asynchronous Motor Drive
4	Control Panel	Hydraulic Decoiler
5	Peeler	0.75 kW Motorized Drive
6	Entry Feeding Shovel	Forward - Backward 400 mm Stroke Up - Down / Hydraulic System
7	Entry Guiding Rollers	
8	Feeder	Ø126 x 2 Rollers - 600 mm Width
9	Feeder Motor	2.2 kW Asynchronous Motor with Shaft Transmission
10	Slitting Head	Interchangeable Blade System
11	Slitting Head Motor	30 kW Asynchronous Main Motor / 0.55 kW Blade Adjustment Motor
12	Scrap Recoiler Entry Shovel	Hydraulic Piston System
13	Scrap Recoiler	2.2 kW Asynchronous Motor Drive
14	Scrap Recoiler	Hydraulic Piston Open/Close System
15	Loop / Pit Shovels	Hydraulic Piston System
16	Loop / Pit Oscillation Rollers	Mechanical System
17	Separator Before Tensioner	Adjustable Mechanical System
18	Tensioner Pinch Rollers	Ø195 x 2 Rollers - 600 mm Width
19	Pinch Rollers Motor	2.2 kW Asynchronous Motor Drive
20	Tensioner Body	Pneumatic Piston Press System
21	Tensioner Exit Shovel	Hydraulic Piston System
22	Recoiler Hydraulic Unit	80 Liters Hydraulic Power Unit with 5.5 kW Asynchronous Motor
23	Separator	Adjustable Hydraulic System
24	Hydraulic Recoiler	6 Tons 600 mm Ø530 30 kW Asynchronous Motor / Max. Coil Ø1300
25	Coil Pusher	Hydraulic System
26	Coil Turnstile	3 kW Asynchronous Motor
27	Control Panel	Main Control Panel
28	Control Panel	Hydraulic Recoiler Control & Tensioner
29	Electrical Control Panel	



General Specifications	Decoiler
Total Motor Power (kW)	10 (kW)
Max. Speed	Laser Sensor Control
Sheet Thickness	0.5 - 3 mm
Max. Coil Width	600 mm
Coil Weight Capacity	6 Ton
Coil Inner Diameter	480-530 mm
Coil Outer Diameter	1300 mm

General Specifications	Pinch Rollers
Total Motor Power (kW)	3 (kW)
Max. Speed	40 m/max.
Sheet Thickness	0.5 - 3 mm
Max. Coil Width	600 mm
Pinch Rollers' Quantity	2
Roller Diameter	126 mm

General Specifications	Slitting
Total Motor Power (kW)	36 (kW)
Max. Speed	75 m/max.
Sheet Thickness	0.5 - 3 mm
Max. Coil Width	600 mm

Desired speed and power values may vary according to the specific order.



General Specifications	Scrap Recoiler
Total Motor Power (kW)	4,4 (kW)
Max. Speed	40 m/max.
Sheet Thickness	0.5 - 3 mm
Maximum Scrap Width	5 - 30 mm
Max. Coil Weight Capacity	100 kg

General Specifications	Sheet Tensioner
Total Motor Power (kW)	2,2 (kW)
Feed Rollers	195 mm
Sheet Thickness	0.5 - 3 mm
Max. Coil Width	600 mm

General Specifications	Recoiler
Total Motor Power (kW)	39 (kW)
Min. / Max. Speed	50 m/min. - 145 m/max.
Sheet Thickness	0.5 - 3 mm
Max. Coil Width	600 mm
Coil Weight Capacity	6 Ton
Coil Inner Diameter	508 mm
Coil Outer Diameter	1300 mm

Desired speed and power values may vary according to the specific order.

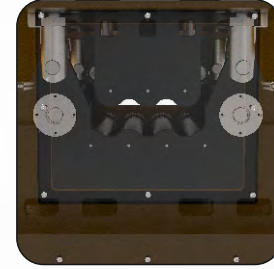


**PRECISION
IN MOTION**



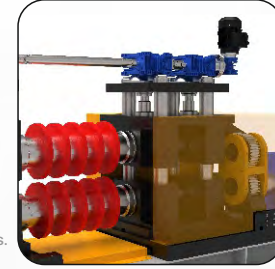
6-Ton Decoiler:

Designed for heavy-tonnage metal coils with its high-strength steel body and powerful gearbox system, the 6-ton decoiler operates with hydraulic mandrel clamping and expansion, providing safe handling and long service life. It is an ideal solution for industrial production lines.



Leveler Unit:

Designed to ensure that the sheet metal uncoiled from the roll advances through the production line smoothly and without tension, the straightening unit prevents loss of form by removing slight twists and curls in the material, providing an ideal starting point for high-precision operations.



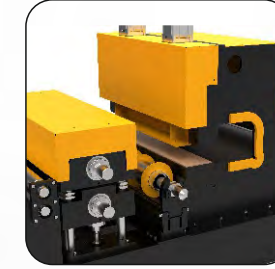
Slitting Unit:

It is a critical process unit that separates the main coil into strips of desired widths with high precision, increasing production efficiency through its cutting quality and dimensional repeatability.



Scrap Recoiler Unit:

An auxiliary unit that winds edge scraps generated during the slitting process in a safe and controlled manner, ensuring the line operates cleanly, continuously, and in compliance with operator safety standards.



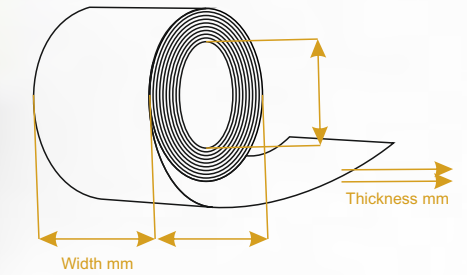
Sheet Tensioner:

An integrated press and tensioning unit that provides tension control throughout the line while ensuring the sheet is formed into the desired shape; it offers a compact and efficient solution for high-precision operations. By maintaining material stability, it increases both quality and production speed.



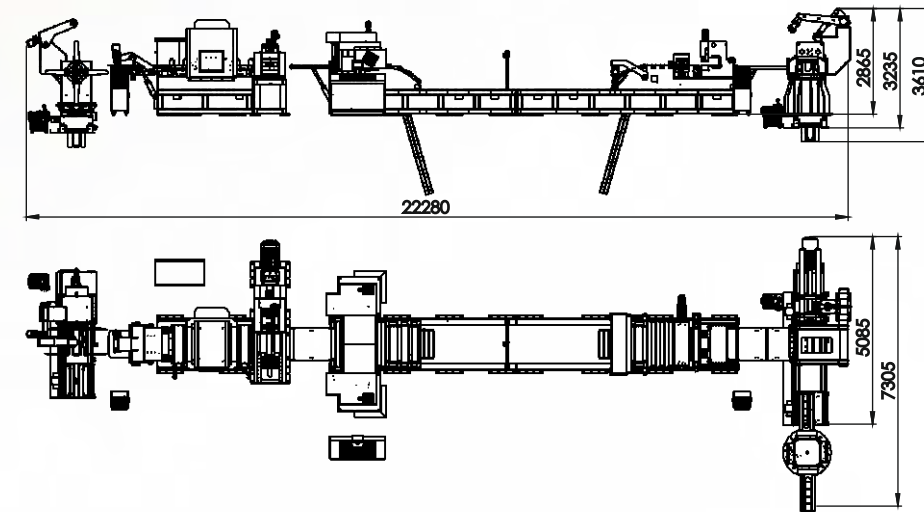
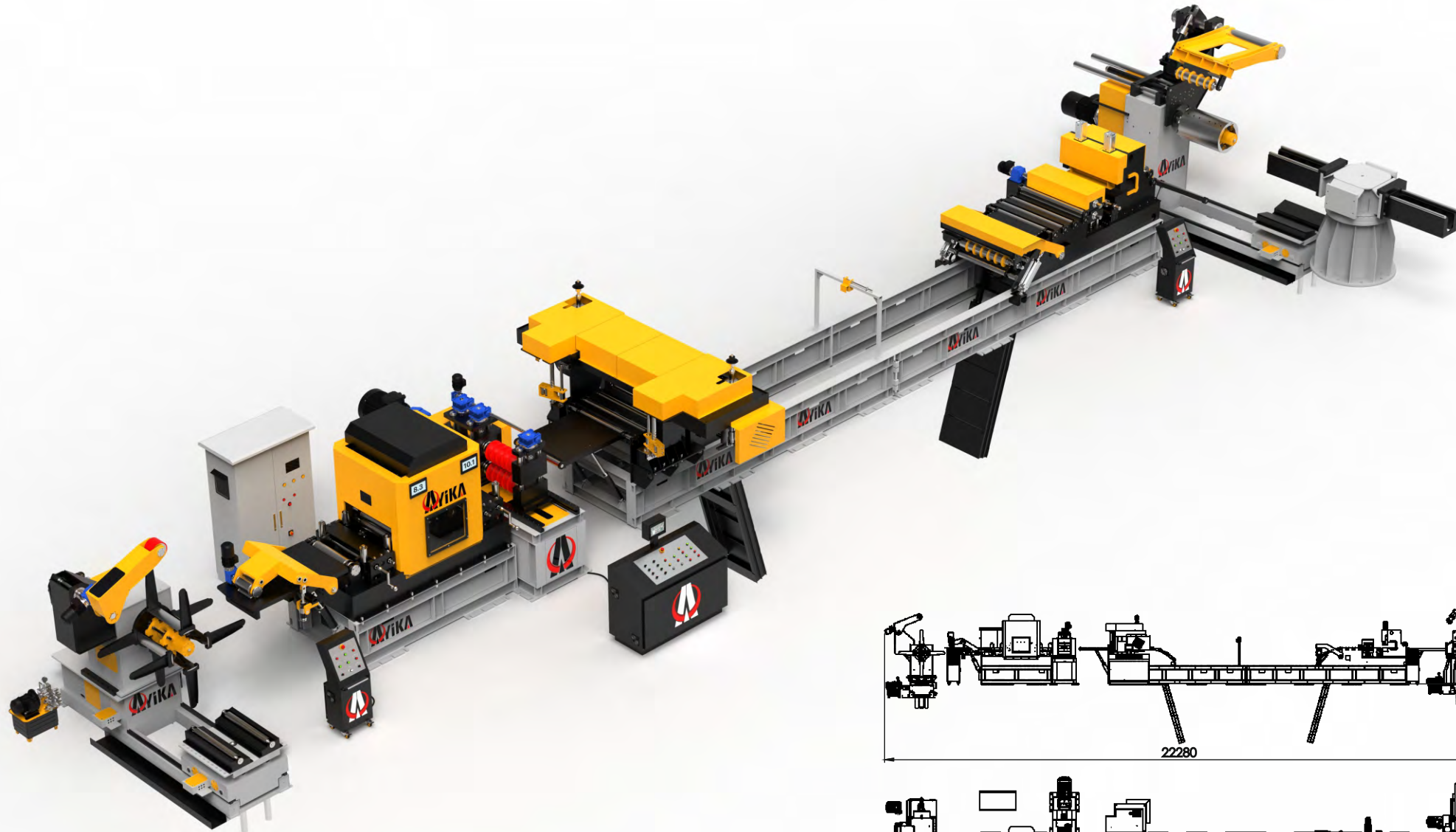
Recoiler:

The recoiler unit, which ensures that the slitted sheets are rewound into rolls in a regular and tight manner, enables the efficient completion of the production line with its automatic winding control and robust structure.



Scan the QR code to watch the video.

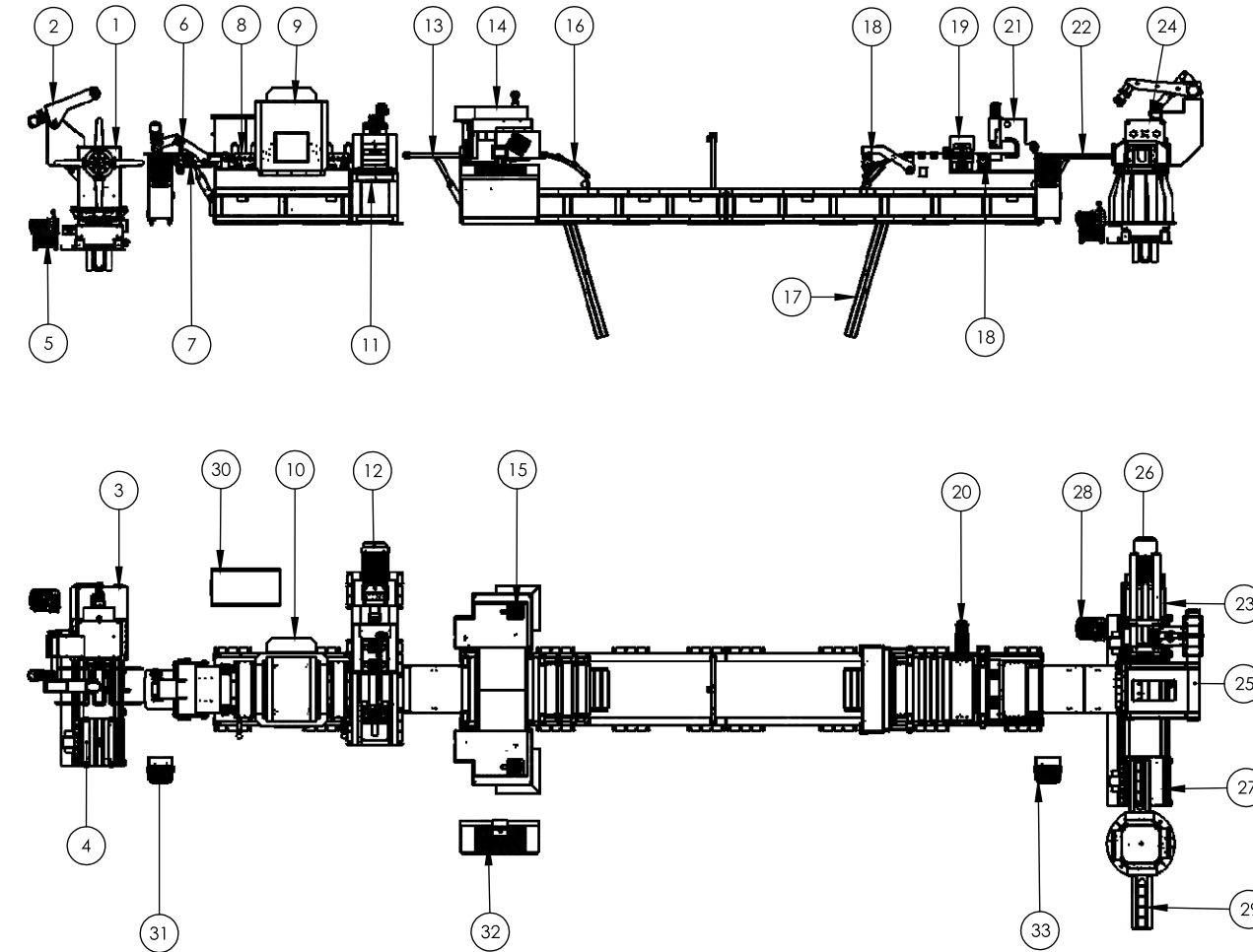
	Coil Width	Strip Thickness	Coil Weight	Entry Coil I.D.	Entry Coil O.D.	Line Speed	Number of Slitting
Min.							
Max.							



Sheet Thickness	Iron	Stainless Steel	Aluminum
0,5mm	20 pcs	18 pcs	25 pcs
1mm	16 pcs	12 pcs	20 pcs
2mm	14 pcs	8 pcs	18 pcs
3mm	8 pcs	4 pcs	12 pcs

Maximum number of cuts depending on material type.

Layout plans and concrete foundation dimensions must be prepared prior to installation.



No	Part Information	Part Notes
1	Hydraulic Decoller	6 Tons 600 mm Ø480-Ø530 3 kW Asynchronous Motor / Max. Coil Ø1300
2	Hydraulic Snubber Arm	0.75 kW Asynchronous Motor Drive
3	Coil Centering	Hydraulic Piston System
4	Coil Car	Gear-Driven / Hydraulic Piston System
5	Decoller Hydraulic Unit	80 Liters / 5.5 kW Asynchronous Motor Drive
6	Peeler	0.75 kW Motorized Drive
7	Entry Feeding Shovel	Forward - Backward 400 mm Stroke Up - Down / Hydraulic System
8	Entry Guiding Rollers	Mechanical System
9	Feeder	Ø135 x 4 Drive Units / Ø90 x 7 Leveling Units / Ø90 x 27 Support Units = 38 Rolls Hydraulic Straightening System
10	Feeder Motor	PN1902 - 15 kW Motor- Driven Gear Transmission System
11	Slitting Head	Interchangeable Blade System
12	Slitting Head Motor	30 kW Asynchronous Main Motor / 0.55 kW Blade Adjustment Motor
13	Scrap Recoiler Entry Shovel	Hydraulic Piston System
14	Scrap Recoiler	2.2 kW Asynchronous Motor Drive
15	Scrap Recoiler	Hydraulic Piston Open/Close System
16	Loop / Pit Oscillation Rollers	Mechanical System
17	Loop / Pit Shovels	Hydraulic Piston System
18	Separator Before Tensioner	Adjustable Mechanical System
19	Tensioner Pinch Rollers	Ø195 x 2 Rollers - 600 mm Width
20	Pinch Rollers Motor	2.2 kW Asynchronous Motor Drive
21	Tensioner Body	Pneumatic Piston Press System
22	Tensioner Exit Shovel	Hydraulic Piston System
23	Hydraulic Recoiler	6 Tons 600 mm Ø530 30 kW Asynchronous Motor / Max. Coil Ø1300
24	Coil Pusher	Hydraulic System
25	Recoiler Separator	Adjustable Hydraulic System
26	Coil Centering	Hydraulic Piston System
27	Exit Coil Car	Gear-Driven / Hydraulic Piston System
28	Recoiler Hydraulic Unit	80 Liters Hydraulic Power Unit with 5.5 kW Asynchronous Motor
29	Coil Turnstile	3 kW Asynchronous Motor-Driven
30	Electrical Control Panel	
31	Control Panel	Hydraulic Decoller & Leveler
32	Control Panel	Main Control Panel
33	Control Panel	Hydraulic Recoiler Control & Tensioner



General Specifications	Decoiler
Total Motor Power (kW)	10 (kW)
Max. Speed	Laser Sensor Control
Sheet Thickness	0.5 - 3 mm
Max. Coil Width	600 mm
Coil Weight Capacity	6 Ton
Coil Inner Diameter	480-530 mm
Coil Outer Diameter	1300 mm

General Specifications	Leveler
Total Motor Power (kW)	16 (kW)
Max. Speed	40 m/max.
Sheet Thickness	0.5 - 3 mm
Max. Coil Width	600 mm
Pinch Rollers' Quantity	4
Pinch Rollers' Diameter	135 mm
Leveler Rollers' Quantity	7
Leveler Rollers' Diameter	90 mm
Backup Rollers' Quantity	27
Backup Rollers' Diameter	90 mm

General Specifications	Slitting
Total Motor Power (kW)	36 (kW)
Max. Speed	75 m/max.
Sheet Thickness	0.5 - 3 mm
Max. Coil Width	600 mm

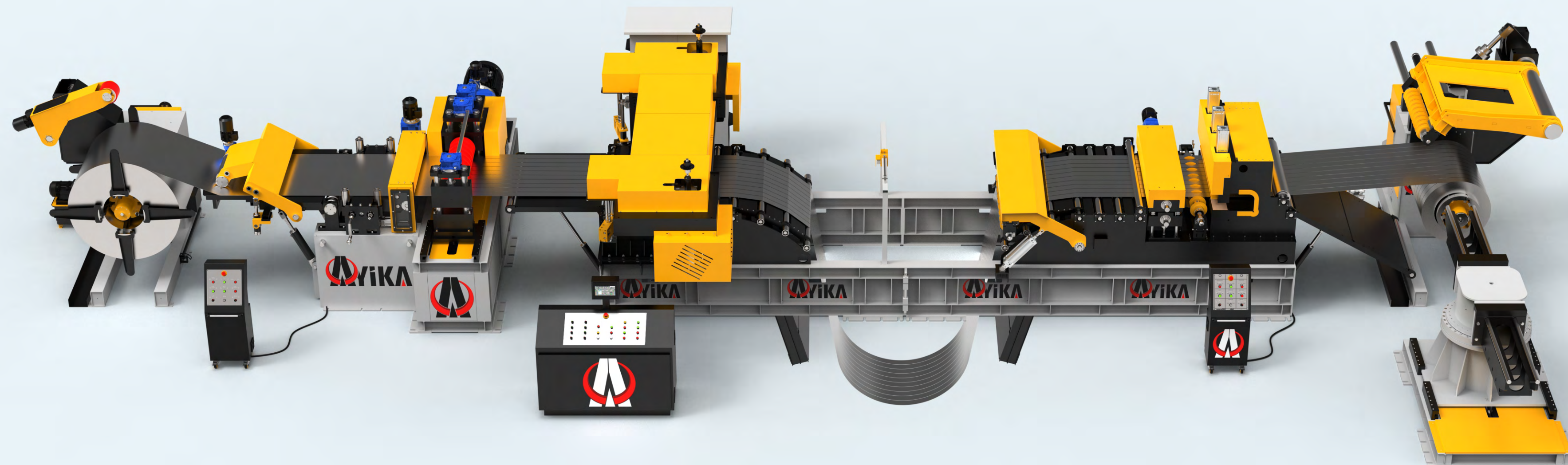
Desired speed and power values may vary according to the specific order.

General Specifications	Scrap Recoiler
Total Motor Power (kW)	4,4 (kW)
Max. Speed	40 m/max.
Sheet Thickness	0.5 - 3 mm
Maximum Scrap Width	5 - 30 mm
Max. Coil Weight Capacity	100 kg

General Specifications	Sheet Tensioner
Total Motor Power (kW)	2,2 (kW)
Feed Rollers	195 mm
Sheet Thickness	0.5 - 3 mm
Max. Coil Width	600 mm

General Specifications	Recoiler
Total Motor Power (kW)	39 (kW)
Min. / Max. Speed	50 m/min. - 145 m/max.
Sheet Thickness	0.5 - 3 mm
Max. Coil Width	600 mm
Coil Weight Capacity	6 Ton
Coil Inner Diameter	508 mm
Coil Outer Diameter	1300 mm

Desired speed and power values may vary according to the specific order.





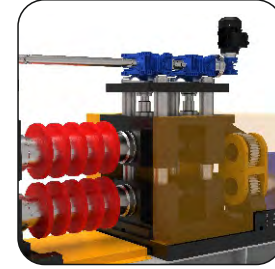
6-Ton Decoiler:

Designed for heavy-tonnage metal coils with its high-strength steel body and powerful gearbox system, the 6-ton decoiler operates with hydraulic mandrel clamping and expansion, providing safe handling and long service life. It is an ideal solution for industrial production lines.



Pinch Roller Unit:

It is used to guide the sheet metal coming from the decoiler into the slitting blades in a smooth and easy manner.



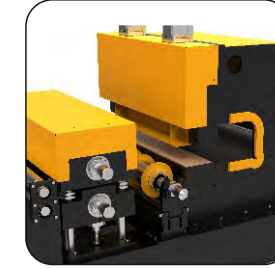
Slitting Unit:

It is a critical process unit that separates the main coil into strips of desired widths with high precision, increasing production efficiency through its cutting quality and dimensional repeatability.



Scrap Recoiler Unit:

An auxiliary unit that winds edge scraps generated during the slitting process in a safe and controlled manner, ensuring the line operates cleanly, continuously, and in compliance with operator safety standards.



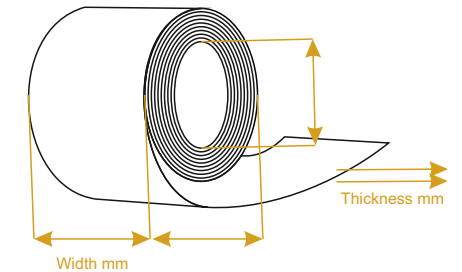
Sheet Tensioner:

An integrated press and tensioning unit that provides tension control throughout the line while ensuring the sheet is formed into the desired shape; it offers a compact and efficient solution for high-precision operations. By maintaining material stability, it increases both quality and production speed.



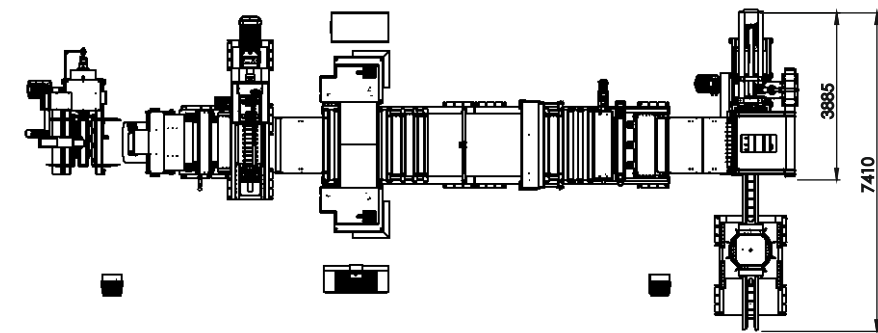
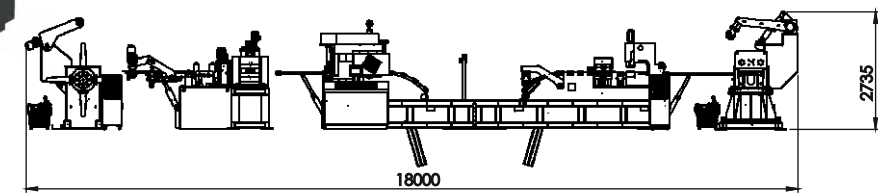
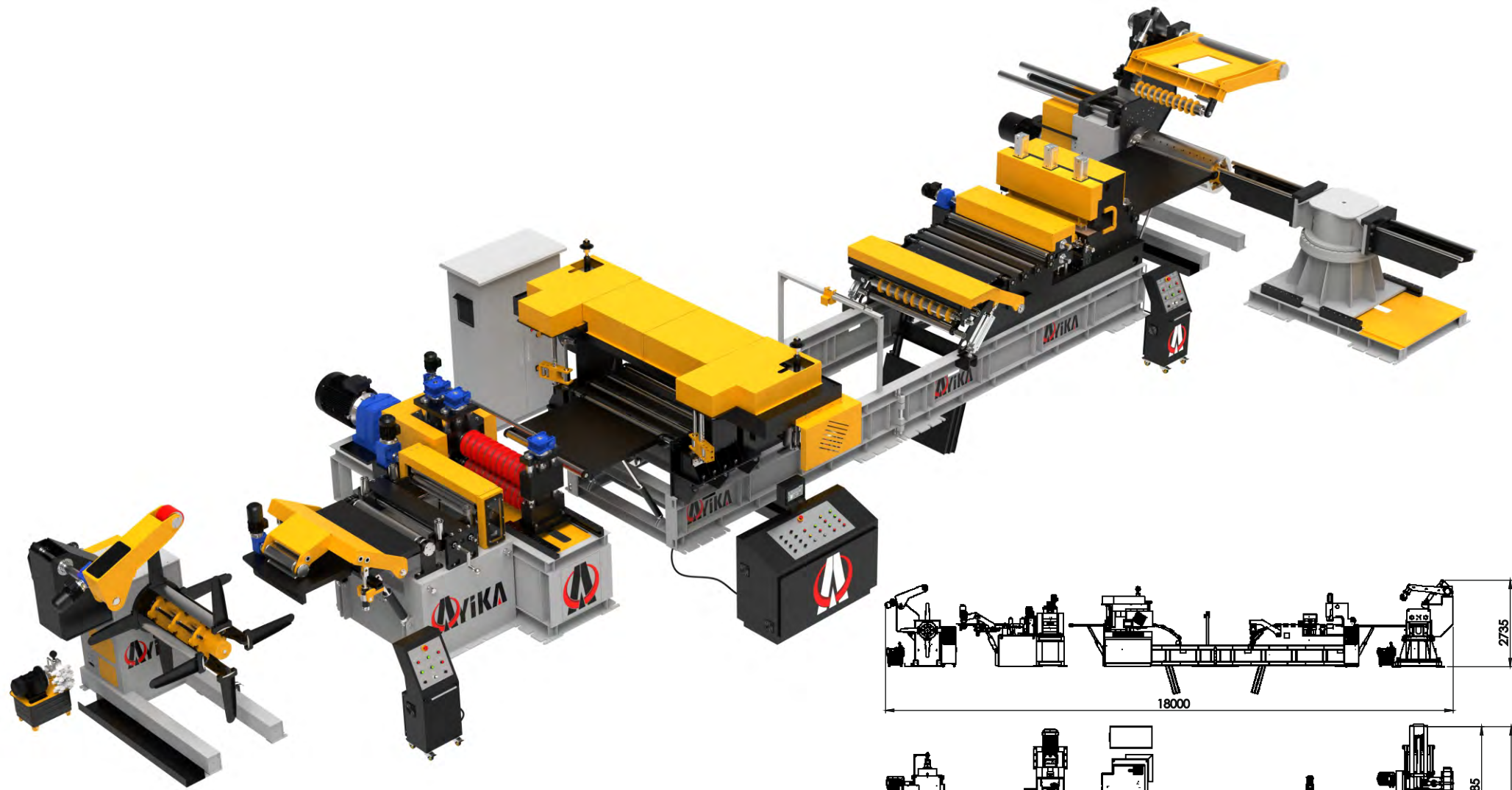
Recoiler:

The recoiler unit, which ensures that the slitted sheets are rewound into rolls in a regular and tight manner, enables the efficient completion of the production line with its automatic winding control and robust structure.



Scan the QR code to watch the video.

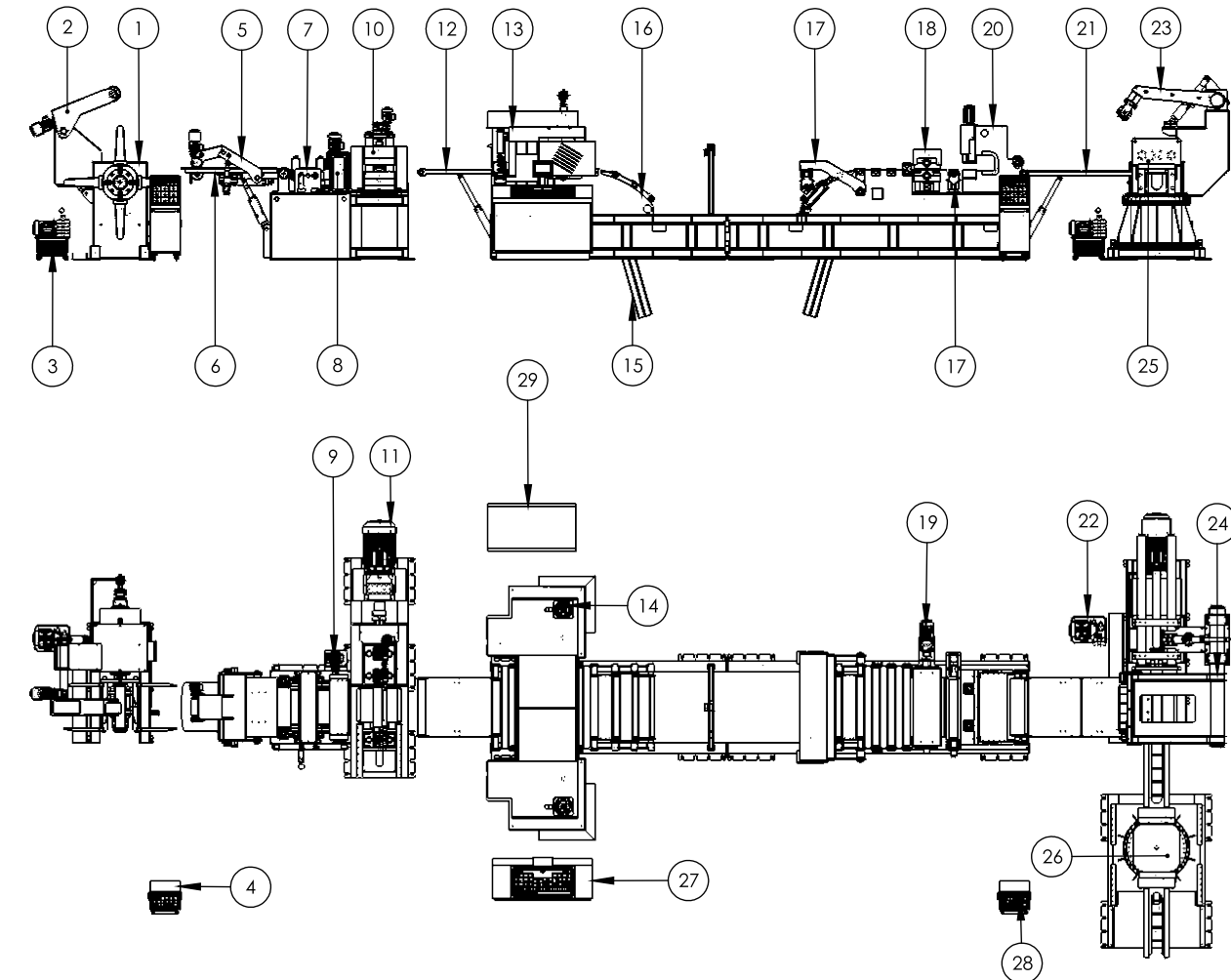
	Coil Width	Strip Thickness	Coil Weight	Entry Coil I.D.	Entry Coil O.D.	Line Speed	Number of Slitting
Min.							
Max.							



Sheet Thickness	Iron	Stainless Steel	Aluminum
0,5mm	20 pcs	18 pcs	25 pcs
1mm	16 pcs	12 pcs	20 pcs
2mm	14 pcs	8 pcs	18 pcs
3mm	8 pcs	4 pcs	12 pcs

Maximum number of cuts depending on material type.

Layout plans and concrete foundation dimensions must be prepared prior to installation.



No	Part Information	Part Notes
1	Hydraulic Decoiler	6 Tons 1000 mm Ø480-Ø530 3 kW Asynchronous Motor / Max. Coil Ø1300
2	Hydraulic Snubber Arm	0.75 kW Asynchronous Motor Drive
3	Decoiler Hydraulic Unit	80 Liters / 5.5 kW Asynchronous Motor Drive
4	Control Panel	Hydraulic Decoiler & Pinch Roller
5	Peeler	0.75 kW Motorized Drive
6	Entry Feeding Shovel	Forward - Backward 400 mm Stroke Up - Down / Hydraulic System
7	Entry Guiding Rollers	
8	Feeder	Ø126 x 2 Rollers - 600 mm Width
9	Feeder Motor	2.2 kW Asynchronous Motor with Shaft Transmission
10	Slitting Head	Interchangeable Blade System
11	Slitting Head Motor	30 kW Asynchronous Main Motor / 0.55 kW Blade Adjustment Motor
12	Scrap Recoiler Entry Shovel	Hydraulic Piston System
13	Scrap Recoiler	2.2 kW Asynchronous Motor Drive
14	Scrap Recoiler	Hydraulic Piston Open/Close System
15	Loop / Pit Shovels	Hydraulic Piston System
16	Loop / Pit Oscillation Rollers	Mechanical System
17	Separator Before Tensioner	Adjustable Mechanical System
18	Tensioner Pinch Rollers	Ø195 x 2 Rollers - 600 mm Width
19	Pinch Rollers Motor	2.2 kW Asynchronous Motor Drive
20	Tensioner Body	Pneumatic Piston Press System
21	Tensioner Exit Shovel	Hydraulic Piston System
22	Recoiler Hydraulic Unit	80 Liters Hydraulic Power Unit with 5.5 kW Asynchronous Motor
23	Recoiler Separator	Adjustable Hydraulic System
24	Hydraulic Recoiler	6 Tons 600 mm Ø530 30 kW Asynchronous Motor / Max. Coil Ø1300
25	Coil Pusher	Hydraulic System
26	Coil Turnstile	3 kW Asynchronous Motor
27	Control Panel	Main Control Panel
28	Control Panel	Hydraulic Recoiler Control & Tensioner
29	Electrical Control Panel	



General Specifications	Decoiler
Total Motor Power (kW)	10 (kW)
Max. Speed	Laser Sensor Control
Sheet Thickness	0.5 - 3 mm
Max. Coil Width	100 mm
Coil Weight Capacity	6 Ton
Coil Inner Diameter	480-530 mm
Coil Outer Diameter	1300 mm

General Specifications	Pinch Rollers
Total Motor Power (kW)	3 (kW)
Max. Speed	40 m/max.
Sheet Thickness	0.5 - 3 mm
Max. Coil Width	1000 mm
Pinch Rollers' Quantity	2
Roller Diameter	126 mm

General Specifications	Slitting
Total Motor Power (kW)	36 (kW)
Max. Speed	75 m/max.
Sheet Thickness	0.5 - 3 mm
Max. Coil Width	1000 mm

Desired speed and power values may vary according to the specific order.

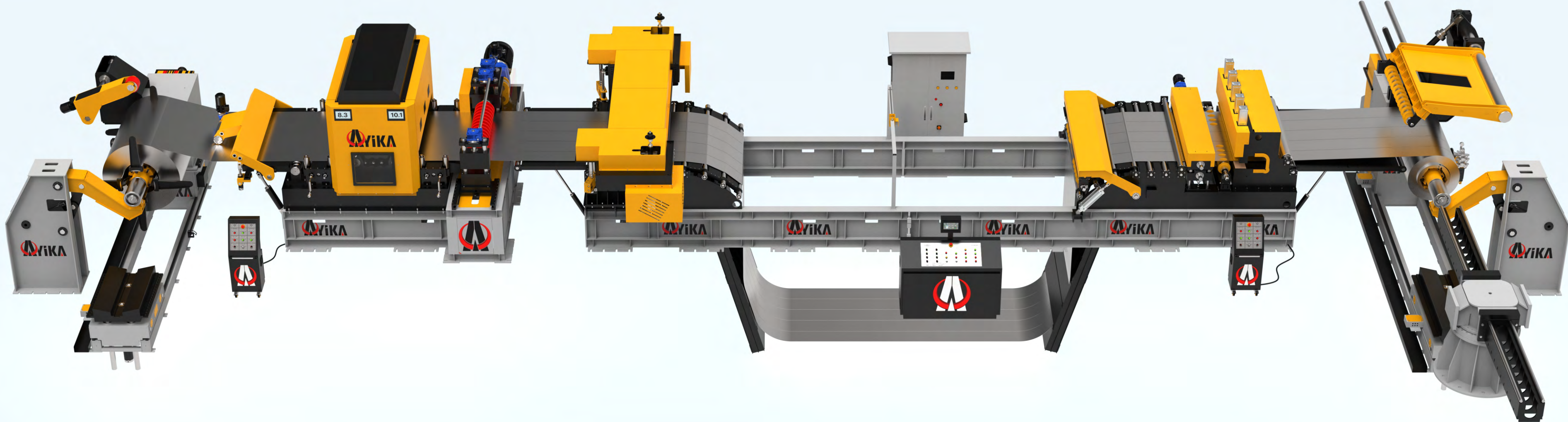


General Specifications	Scrap Recoiler
Total Motor Power (kW)	4,4 (kW)
Max. Speed	40 m/max.
Sheet Thickness	0.5 - 3 mm
Maximum Scrap Width	5 - 30 mm
Max. Coil Weight Capacity	100 kg

General Specifications	Sheet Tensioner
Total Motor Power (kW)	2,2 (kW)
Feed Rollers	195 mm
Sheet Thickness	0.5 - 3 mm
Max. Coil Width	100 mm

General Specifications	Recoiler
Total Motor Power (kW)	39 (kW)
Min. / Max. Speed	50 m/min. - 145 m/max.
Sheet Thickness	0.5 - 3 mm
Max. Coil Width	1000 mm
Coil Weight Capacity	6 Ton
Coil Inner Diameter	508 mm
Coil Outer Diameter	1300 mm

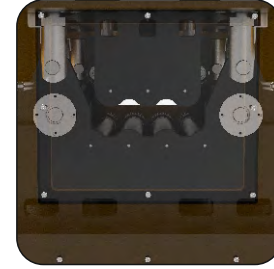
Desired speed and power values may vary according to the specific order.



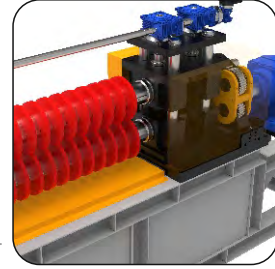
**PRECISION
IN MOTION**



15-Ton Decoiler:
Designed for heavy-tonnage metal coils with its high-strength steel body and powerful gearbox system, the 15-ton decoiler operates with hydraulic mandrel clamping and expansion, providing safe handling and long service life. It is an ideal solution for industrial production lines.



Leveler Unit:
Designed to ensure that the sheet metal uncoiled from the roll advances through the production line smoothly and without tension, the straightening unit prevents loss of form by removing slight twists and curls in the material, providing an ideal starting point for high-precision operations.



Slitting Unit:
It is a critical process unit that separates the main coil into strips of desired widths with high precision, increasing production efficiency through its cutting quality and dimensional repeatability.



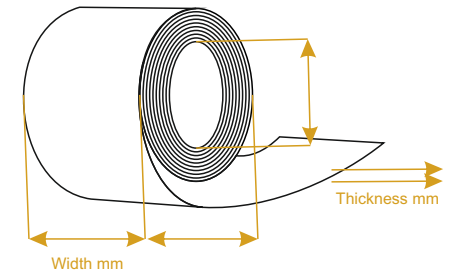
Scrap Recoiler Unit:
An auxiliary unit that winds edge scraps generated during the slitting process in a safe and controlled manner, ensuring the line operates cleanly, continuously, and in compliance with operator safety standards.



Sheet Tensioner:
An integrated press and tensioning unit that provides tension control throughout the line while ensuring the sheet is formed into the desired shape; it offers a compact and efficient solution for high-precision operations. By maintaining material stability, it increases both quality and production speed.

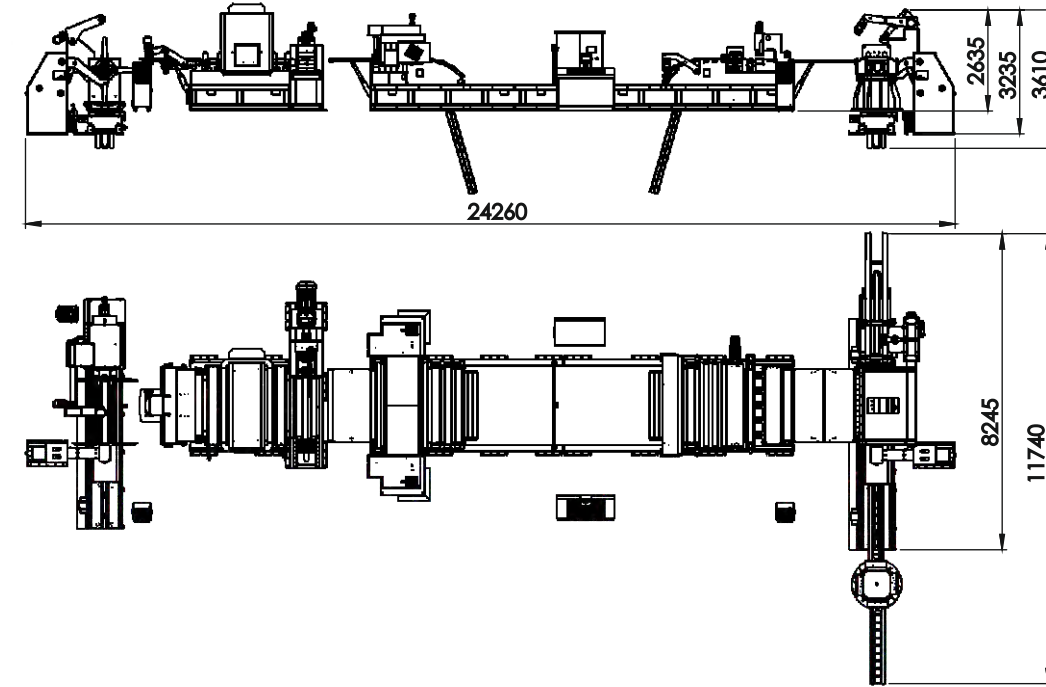
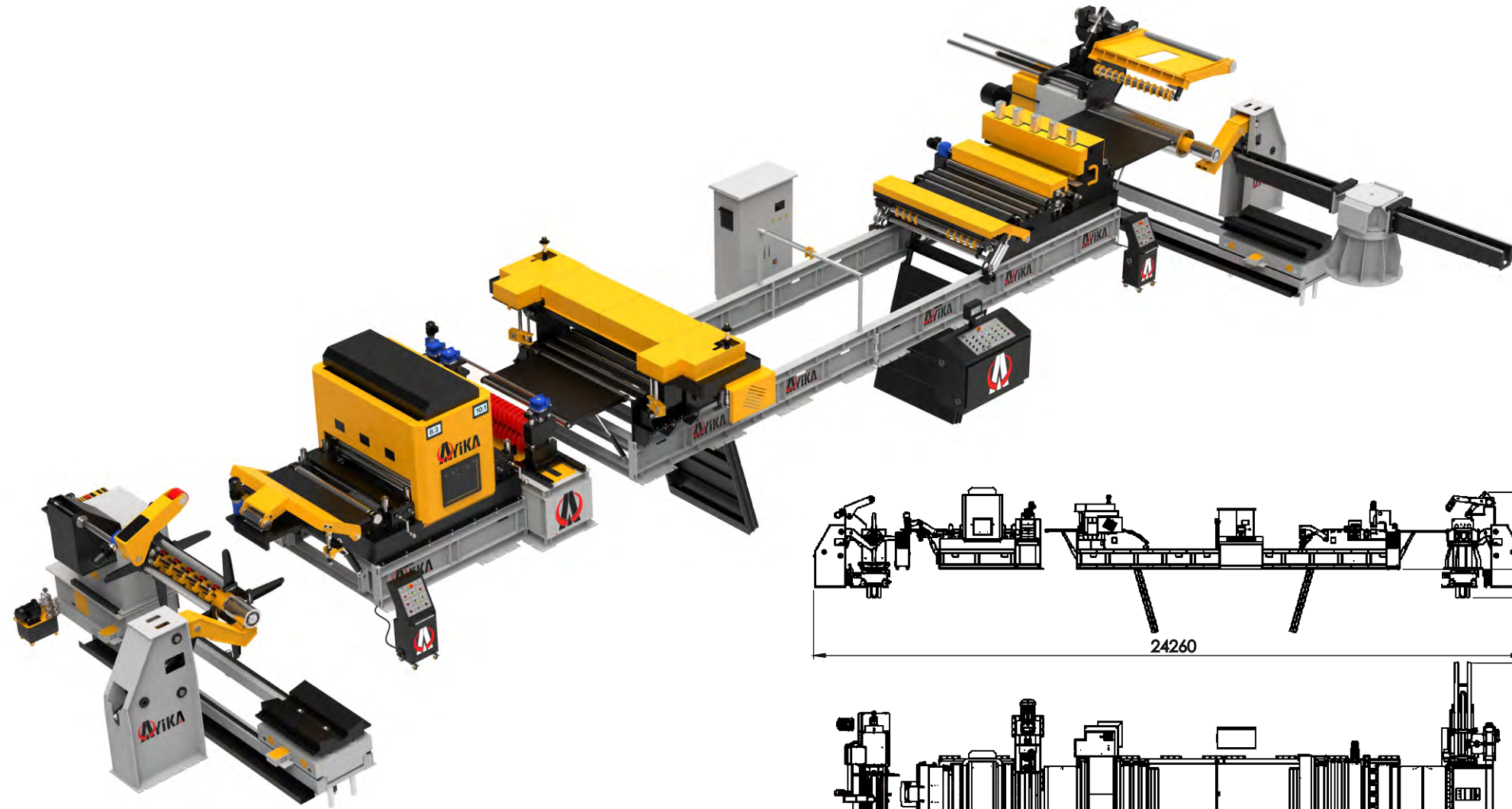


Recoiler:
The recoiler unit, which ensures that the slitted sheets are rewound into rolls in a regular and tight manner, enables the efficient completion of the production line with its automatic winding control and robust structure.



Scan the QR code to watch the video.

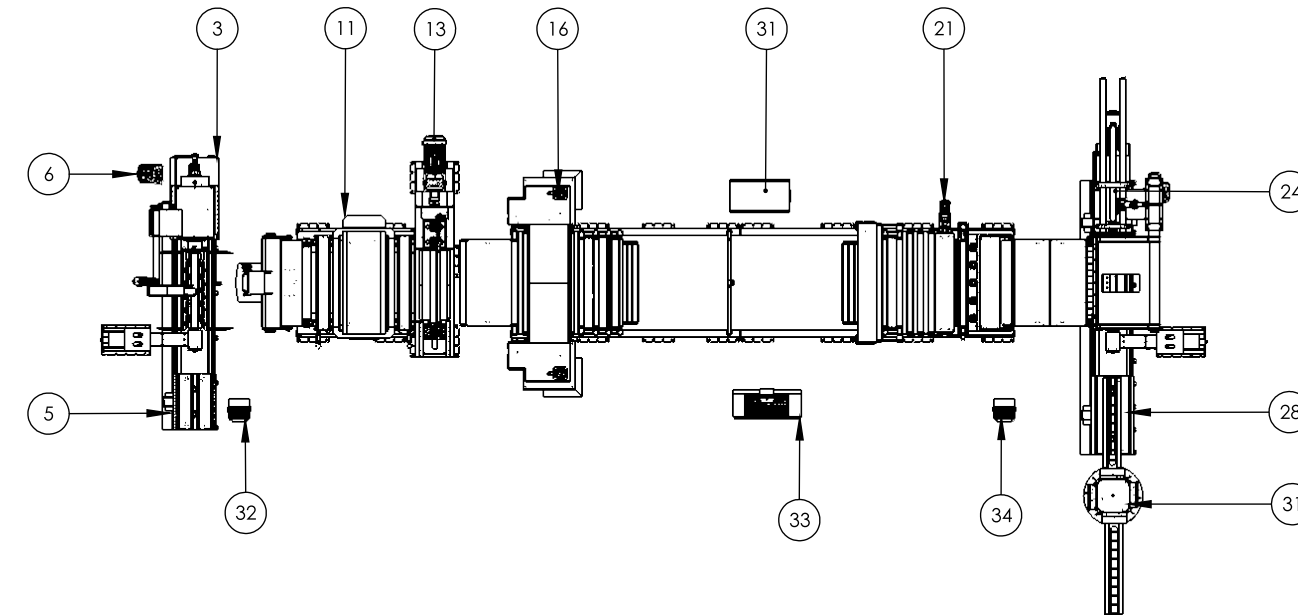
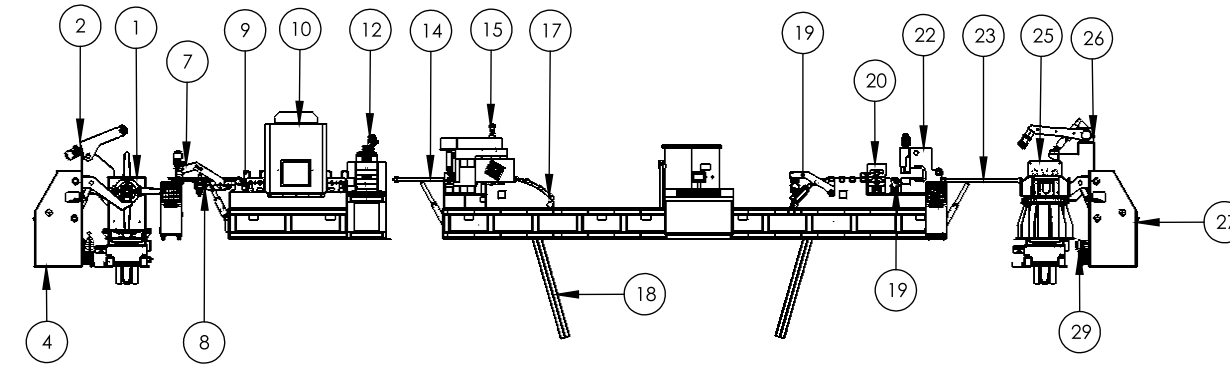
	Coil Width	Strip Thickness	Coil Weight	Entry Coil I.D.	Entry Coil O.D.	Line Speed	Number of Slitting
Min.							
Max.							



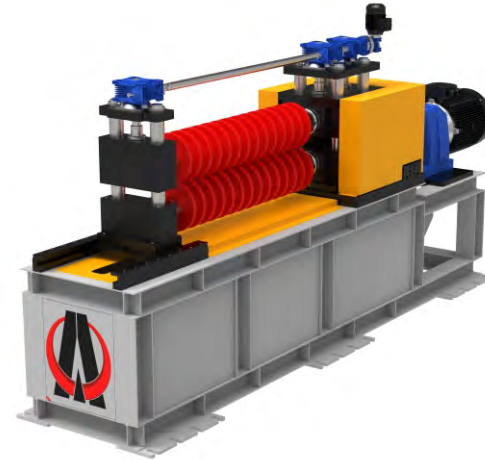
Layout plans and concrete foundation dimensions must be prepared prior to installation.

Sheet Thickness	Iron	Stainless Steel	Aluminum
0,5mm	20 pcs	18 pcs	25 pcs
1mm	16 pcs	12 pcs	20 pcs
2mm	14 pcs	8 pcs	18 pcs
3mm	8 pcs	4 pcs	12 pcs

Maximum number of cuts depending on material type.



No	Part Information	Part Notes
1	Hydraulic Decoiler	15 Tons 1500 mm Ø480-Ø530 4 kW Asynchronous Motor / Max. Coil Ø1600
2	Hydraulic Snubber Arm	0.75 kW Asynchronous Motor Drive
3	Coil Centering	Hydraulic Piston System
4	Shaft Support	Hydraulic Piston System
5	Coil Car	Gear-Driven / Hydraulic Piston System
6	Decoller Hydraulic Unit	80 Liters / 5.5 kW Asynchronous Motor Drive
7	Peeler	0.75 kW Motorized Drive
8	Entry Feeding Shovel	Forward - Backward 400 mm Stroke Up - Down / Hydraulic System
9	Entry Guiding Rollers	Mechanical System
10	Feeder	Ø135 x 4 Drive Units / Ø90 x 7 Leveling Units / Ø90 x 27 Support Units = 38 Rolls Hydraulic Straightening System
11	Feeder Motor	PN1902 - 15 kW Motor- Driven Gear Transmission System
12	Slitting Head	Interchangeable Blade System
13	Slitting Head Motor	55 kW Asynchronous Main Motor / 0.55 kW Blade Adjustment Motor
14	Scrap Recoiler Entry Shovel	Hydraulic Piston System
15	Scrap Recoiler	2.2 kW Asynchronous Motor Drive
16	Scrap Recoiler	Hydraulic Piston Open/Close System
17	Loop / Pit Oscillation Rollers	Mechanical System
18	Loop / Pit Shovels	Hydraulic Piston System
19	Separator Before Tensioner	Adjustable Mechanical System
20	Tensioner Pinch Rollers	Ø195 x 2 Rollers - 1500 mm Width
21	Pinch Rollers Motor	2.2 kW Asynchronous Motor Drive
22	Tensioner Body	Pneumatic Piston Press System
23	Tensioner Exit Shovel	Hydraulic Piston System
24	Hydraulic Recoiler	15 Tons 1500 mm Ø530 30 kW Asynchronous Motor / Max. Coil Ø1600
25	Coil Pusher	Hydraulic System
26	Recoiler Separator	Adjustable Hydraulic System
27	Shaft Support	Hydraulic Piston System
28	Exit Coil Car	Gear-Driven / Hydraulic Piston System
29	Recoiler Hydraulic Unit	80 Liters Hydraulic Power Unit with 5.5 kW Asynchronous Motor
30	Coil Turnstile	3 kW Asynchronous Motor-Driven
31	Electrical Control Panel	
32	Control Panel	Hydraulic Decoiler & Leveler
33	Control Panel	Main Control Panel
34	Control Panel	Hydraulic Recoiler Control & Tensioner



General Specifications	Decoiler
Total Motor Power (kW)	11 (kW)
Max. Speed	Laser Sensor Control
Sheet Thickness	0.5 - 3 mm
Max. Coil Width	1500 mm
Coil Weight Capacity	15 Ton
Coil Inner Diameter	480-530 mm
Coil Outer Diameter	1600 mm

General Specifications	Leveler
Total Motor Power (kW)	16 (kW)
Max. Speed	40 m/max.
Sheet Thickness	0.5 - 3 mm
Max. Coil Width	1500 mm
Pinch Rollers' Quantity	4
Pinch Rollers' Diameter	135 mm
Leveler Rollers' Quantity	7
Leveler Rollers' Diameter	90 mm
Backup Rollers' Quantity	27
Backup Rollers' Diameter	90 mm

General Specifications	Slitting
Total Motor Power (kW)	61 (kW)
Max. Speed	75 m/max.
Sheet Thickness	0.5 - 3 mm
Max. Coil Width	1500 mm

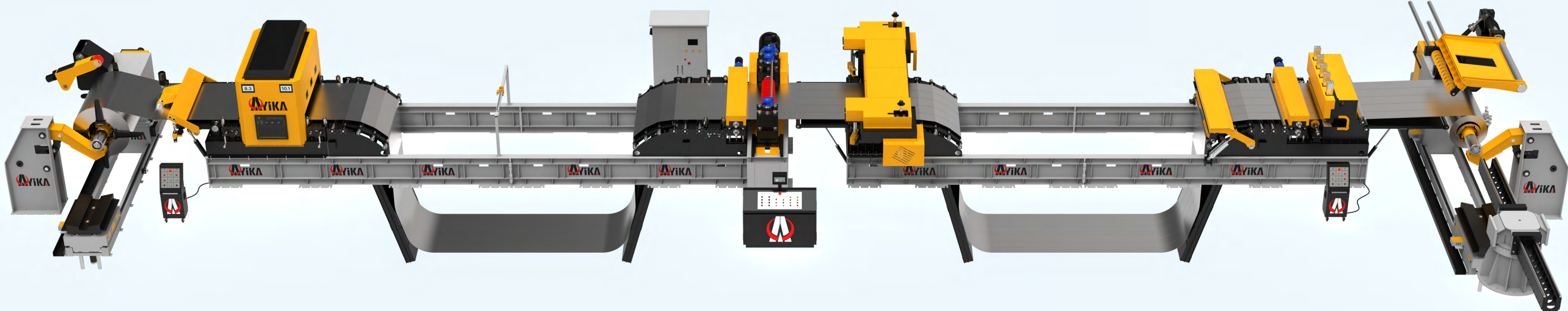
Desired speed and power values may vary according to the specific order.

General Specifications	Scrap Recoiler
Total Motor Power (kW)	4,4 (kW)
Max. Speed	40 m/max.
Sheet Thickness	0.5 - 3 mm
Maximum Scrap Width	5 - 30 mm
Max. Coil Weight Capacity	100 kg

General Specifications	Sheet Tensioner
Total Motor Power (kW)	2,2 (kW)
Driver Roller Quantity	2
Driving Roller Diameter	195 mm
Sheet Thickness	0.5 - 3 mm
Max. Coil Width	1500 mm

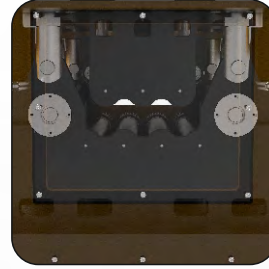
General Specifications	Recoiler
Total Motor Power (kW)	64 (kW)
Min. / Max. Speed	50 m/min. - 145 m/max.
Sheet Thickness	0.5 - 3 mm
Max. Coil Width	1500 mm
Coil Weight Capacity	15 Ton
Coil Inner Diameter	508 mm
Coil Outer Diameter	1600 mm

Desired speed and power values may vary according to the specific order.

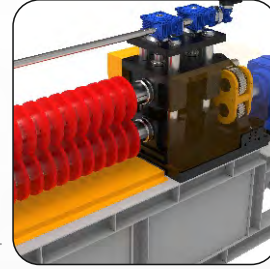




15-Ton Decoiler:
Designed for heavy-tonnage metal coils with its high-strength steel body and powerful gearbox system, the 15-ton decoiler operates with hydraulic mandrel clamping and expansion, providing safe handling and long service life. It is an ideal solution for industrial production lines.



Leveler Unit:
Designed to ensure that the sheet metal uncoiled from the roll advances through the production line smoothly and without tension, the straightening unit prevents loss of form by removing slight twists and curls in the material, providing an ideal starting point for high-precision operations.



Slitting Unit:
It is a critical process unit that separates the main coil into strips of desired widths with high precision, increasing production efficiency through its cutting quality and dimensional repeatability.



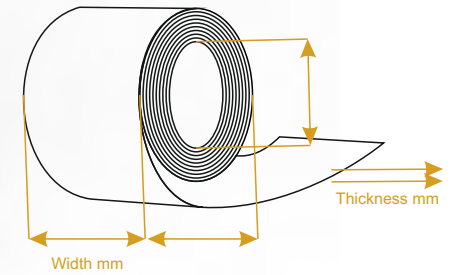
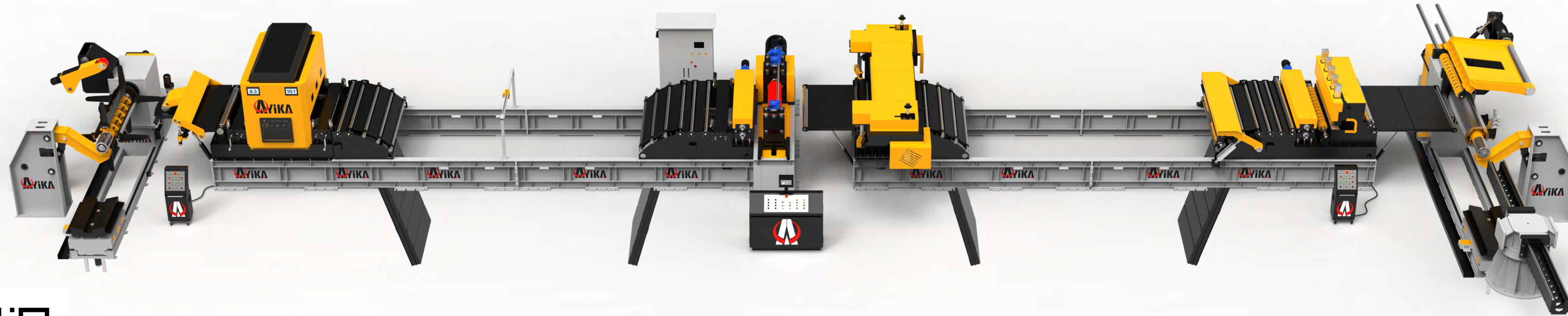
Scrap Recoiler Unit:
An auxiliary unit that winds edge scraps generated during the slitting process in a safe and controlled manner, ensuring the line operates cleanly, continuously, and in compliance with operator safety standards.



Sheet Tensioner:
An integrated press and tensioning unit that provides tension control throughout the line while ensuring the sheet is formed into the desired shape; it offers a compact and efficient solution for high-precision operations. By maintaining material stability, it increases both quality and production speed.

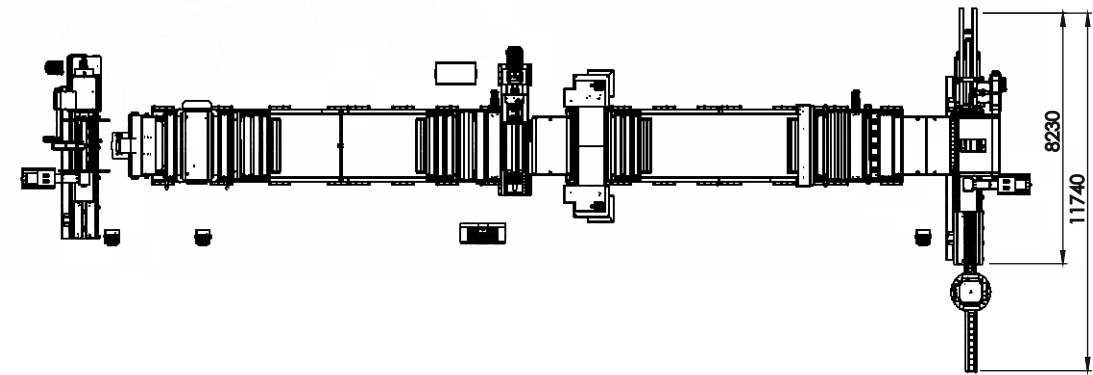
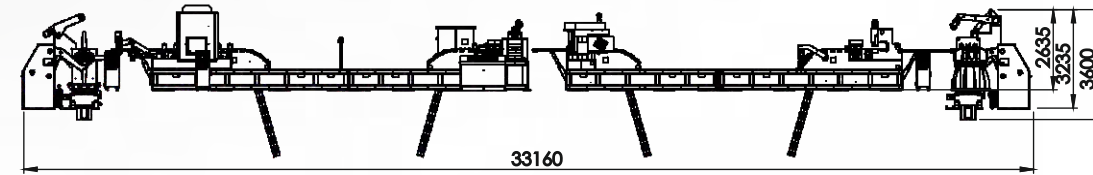
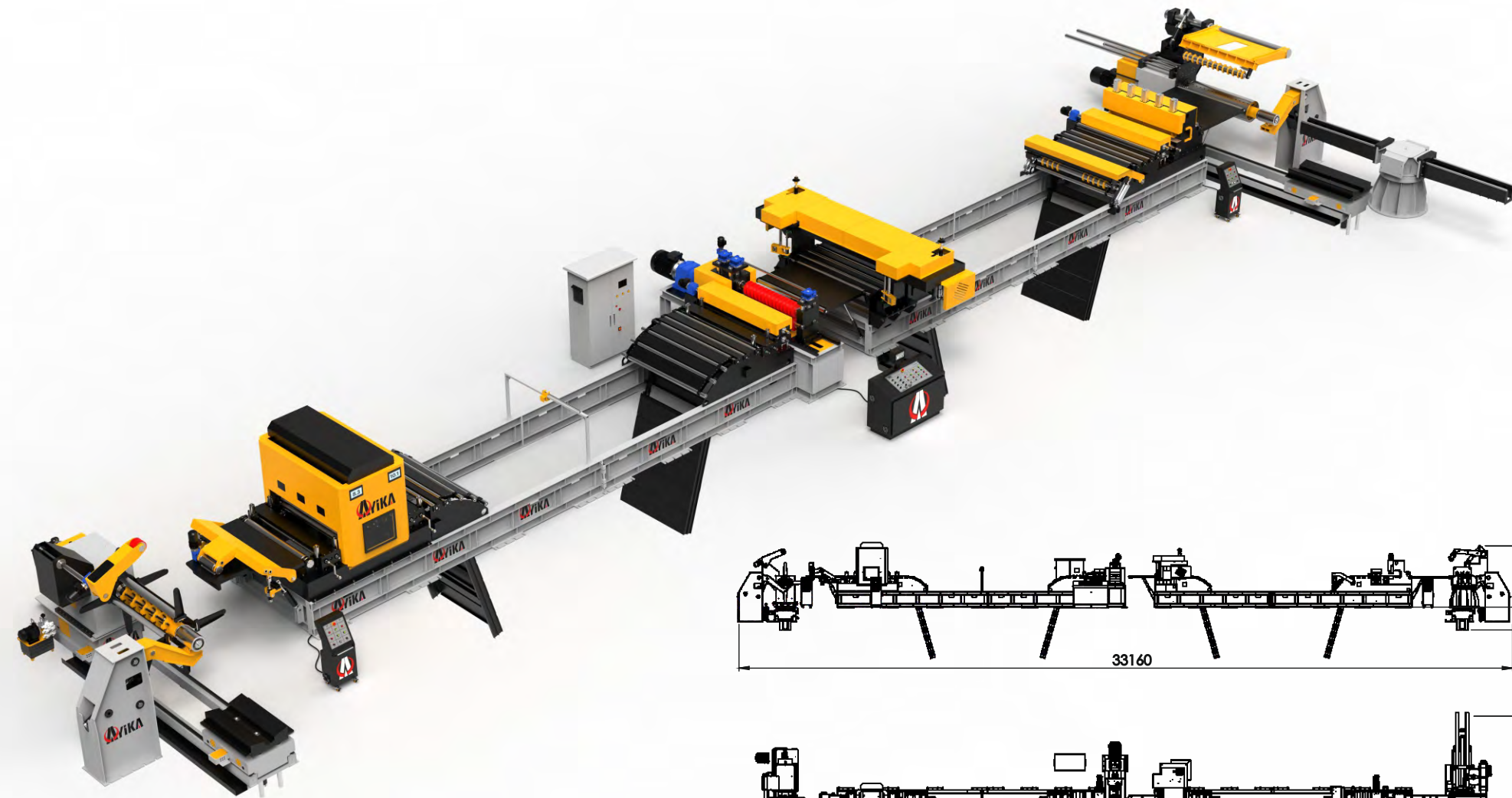


Recoiler:
The recoiler unit, which ensures that the slitted sheets are rewound into rolls in a regular and tight manner, enables the efficient completion of the production line with its automatic winding control and robust structure.



Scan the QR code to watch the video.

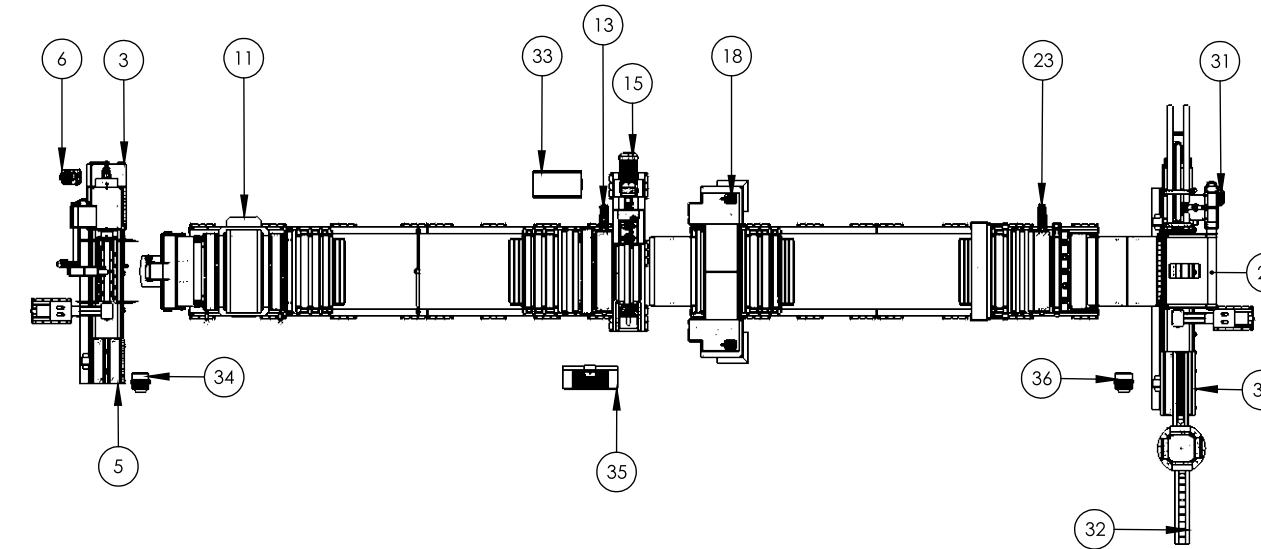
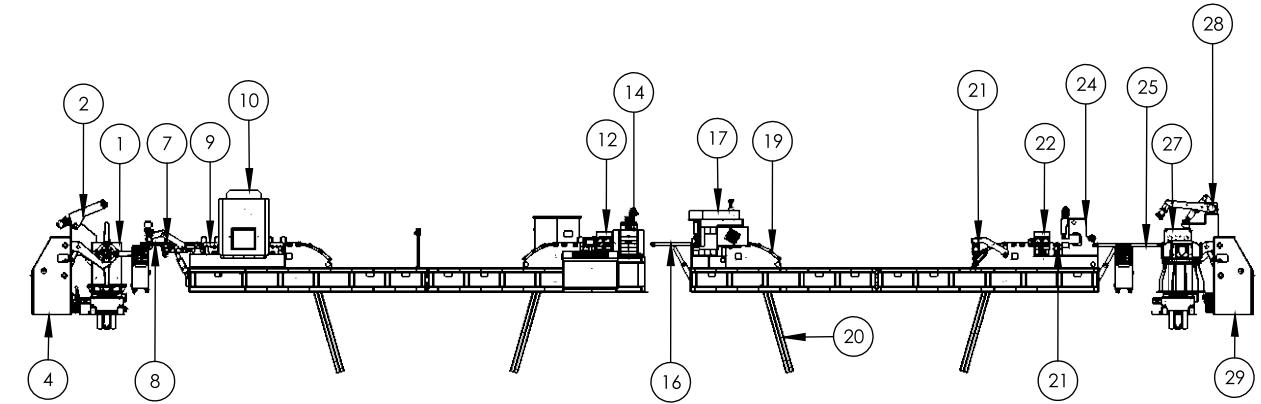
	Coil Width	Strip Thickness	Coil Weight	Entry Coil I.D.	Entry Coil O.D.	Line Speed	Number of Slitting
Min.							
Max.							



Sheet Thickness	Iron	Stainless Steel	Aluminum
0,5mm	20 pcs	18 pcs	25 pcs
1mm	16 pcs	12 pcs	20 pcs
2mm	14 pcs	8 pcs	18 pcs
3mm	8 pcs	4 pcs	12 pcs

Maximum number of cuts depending on material type.

Layout plans and concrete foundation dimensions must be prepared prior to installation.



No	Part Information	Part Notes
1	Hydraulic Decoiler	15 Tons 1500 mm Ø480-Ø530 4 kW Asynchronous Motor / Max. Coil Ø1600
2	Hydraulic Snubber Arm	0.75 kW Asynchronous Motor Drive
3	Coil Centering	Hydraulic Piston System
4	Shaft Support	Hydraulic Piston System
5	Coil Car	Gear-Driven / Hydraulic Piston System
6	Decoller Hydraulic Unit	80 Liters / 5.5 kW Asynchronous Motor Drive
7	Peeler	0.75 kW Motorized Drive
8	Entry Feeding Shovel	Forward - Backward 400 mm Stroke Up - Down / Hydraulic System
9	Entry Guiding Rollers	Mechanical System
10	Feeder	Ø135 x 4 Drive Units / Ø90 x 7 Leveling Units / Ø90 x 27 Support Units = 38 Rolls Hydraulic Straightening System
11	Feeder Motor	PN1902 - 15 kW Motor- Driven Gear Transmission System
12	Slitter Entry Bridle	Ø195 x 2 Rollers - 1500 mm Width
13	Slitter Entry Pull Motor	2.2 kW Asynchronous Motor Drive
14	Slitting Head	Interchangeable Blade System
15	Slitting Head Motor	55 kW Asynchronous Main Motor / 0.55 kW Blade Adjustment Motor
16	Scrap Recoiler Entry Shovel	Hydraulic Piston System
17	Scrap Recoiler	2.2 kW Asynchronous Motor Drive
18	Scrap Recoiler	Hydraulic Piston Open/Close System
19	Loop / Pit Oscillation Rollers	Mechanical System
20	Loop / Pit Shovels	Hydraulic Piston System
21	Separator Before Tensioner	Adjustable Mechanical System
22	Tensioner Pinch Rollers	Ø195 x 2 Rollers - 1500 mm Width
23	Pinch Rollers Motor	2.2 kW Asynchronous Motor Drive
24	Tensioner Body	Pneumatic Piston Press System
25	Tensioner Exit Shovel	Hydraulic Piston System
26	Hydraulic Recoiler	15 Tons 1500 mm Ø530 55 kW Asynchronous Motor / Max. Coil Ø1600
27	Coil Pusher	Hydraulic System
28	Recoiler Separator	Adjustable Hydraulic System
29	Shaft Support	Hydraulic Piston System
30	Exit Coil Car	Gear-Driven / Hydraulic Piston System
31	Recoiler Hydraulic Unit	80 Liters Hydraulic Power Unit with 5.5 kW Asynchronous Motor
32	Coil Turnstile	3 kW Asynchronous Motor-Driven
33	Electrical Control Panel	
34	Control Panel	Hydraulic Decoiler & Leveler
35	Control Panel	Main Control Panel
36	Control Panel	Hydraulic Recoiler Control & Tensioner



General Specifications	Decoiler
Total Motor Power (kW)	11 (kW)
Max. Speed	Laser Sensor Control
Sheet Thickness	0.5 - 3 mm
Max. Coil Width	1500 mm
Coil Weight Capacity	15 Ton
Coil Inner Diameter	480-530 mm
Coil Outer Diameter	1600 mm

General Specifications	Leveler
Total Motor Power (kW)	16 (kW)
Max. Speed	40 m/max.
Sheet Thickness	0.5 - 3 mm
Max. Coil Width	1500 mm
Pinch Rollers' Quantity	4
Pinch Rollers' Diameter	135 mm
Leveler Rollers' Quantity	7
Leveler Rollers' Diameter	90 mm
Backup Rollers' Quantity	27
Backup Rollers' Diameter	90 mm

General Specifications	Slitting
Total Motor Power (kW)	63 (kW)
Max. Speed	75 m/max.
Sheet Thickness	0.5 - 3 mm
Max. Coil Width	1500 mm
Driver Roller Quantity	2
Driving Roller Diameter	195 mm

Desired speed and power values may vary according to the specific order.



General Specifications	Scrap Recoiler
Total Motor Power (kW)	4,4 (kW)
Max. Speed	40 m/max.
Sheet Thickness	0.5 - 3 mm
Maximum Scrap Width	5 - 30 mm
Max. Coil Weight Capacity	100 kg

General Specifications	Sheet Tensioner
Total Motor Power (kW)	2,2 (kW)
Driver Roller Quantity	2
Driving Roller Diameter	195 mm
Sheet Thickness	0.5 - 3 mm
Max. Coil Width	1500 mm

General Specifications	Recoiler
Total Motor Power (kW)	64 (kW)
Min. / Max. Speed	50 m/min. - 145 m/max.
Sheet Thickness	0.5 - 3 mm
Max. Coil Width	1500 mm
Coil Weight Capacity	15 Ton
Coil Inner Diameter	508 mm
Coil Outer Diameter	1600 mm

Desired speed and power values may vary according to the specific order.

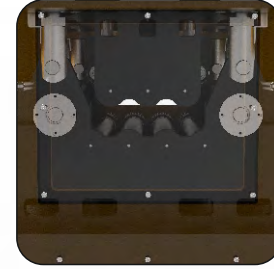


PRECISION
IN MOTION



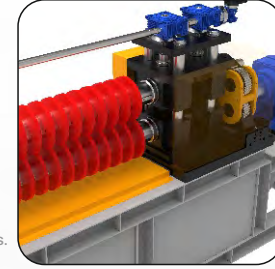
20-Ton Decoiler:

Designed for heavy-tonnage metal coils with its high-strength steel body and powerful gearbox system, the 20-ton decoiler operates with hydraulic mandrel clamping and expansion, providing safe handling and long service life. It is an ideal solution for industrial production lines.



Leveler Unit:

Designed to ensure that the sheet metal uncoiled from the roll advances through the production line smoothly and without tension, the straightening unit prevents loss of form by removing slight twists and curls in the material, providing an ideal starting point for high-precision operations.



Slitting Unit:

It is a critical process unit that separates the main coil into strips of desired widths with high precision, increasing production efficiency through its cutting quality and dimensional repeatability.



Scrap Recoiler Unit:

An auxiliary unit that winds edge scraps generated during the slitting process in a safe and controlled manner, ensuring the line operates cleanly, continuously, and in compliance with operator safety standards.



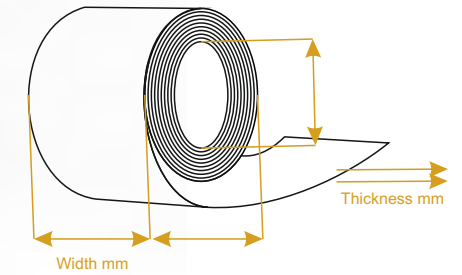
Sheet Tensioner:

An integrated press and tensioning unit that provides tension control throughout the line while ensuring the sheet is formed into the desired shape; it offers a compact and efficient solution for high-precision operations. By maintaining material stability, it increases both quality and production speed.



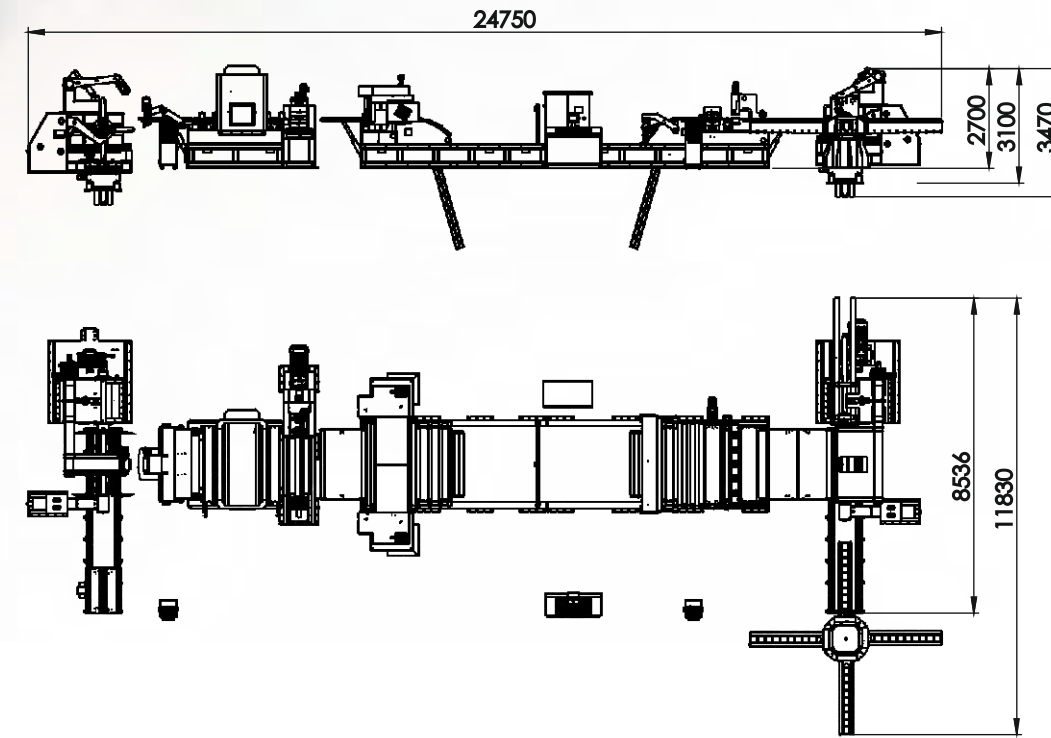
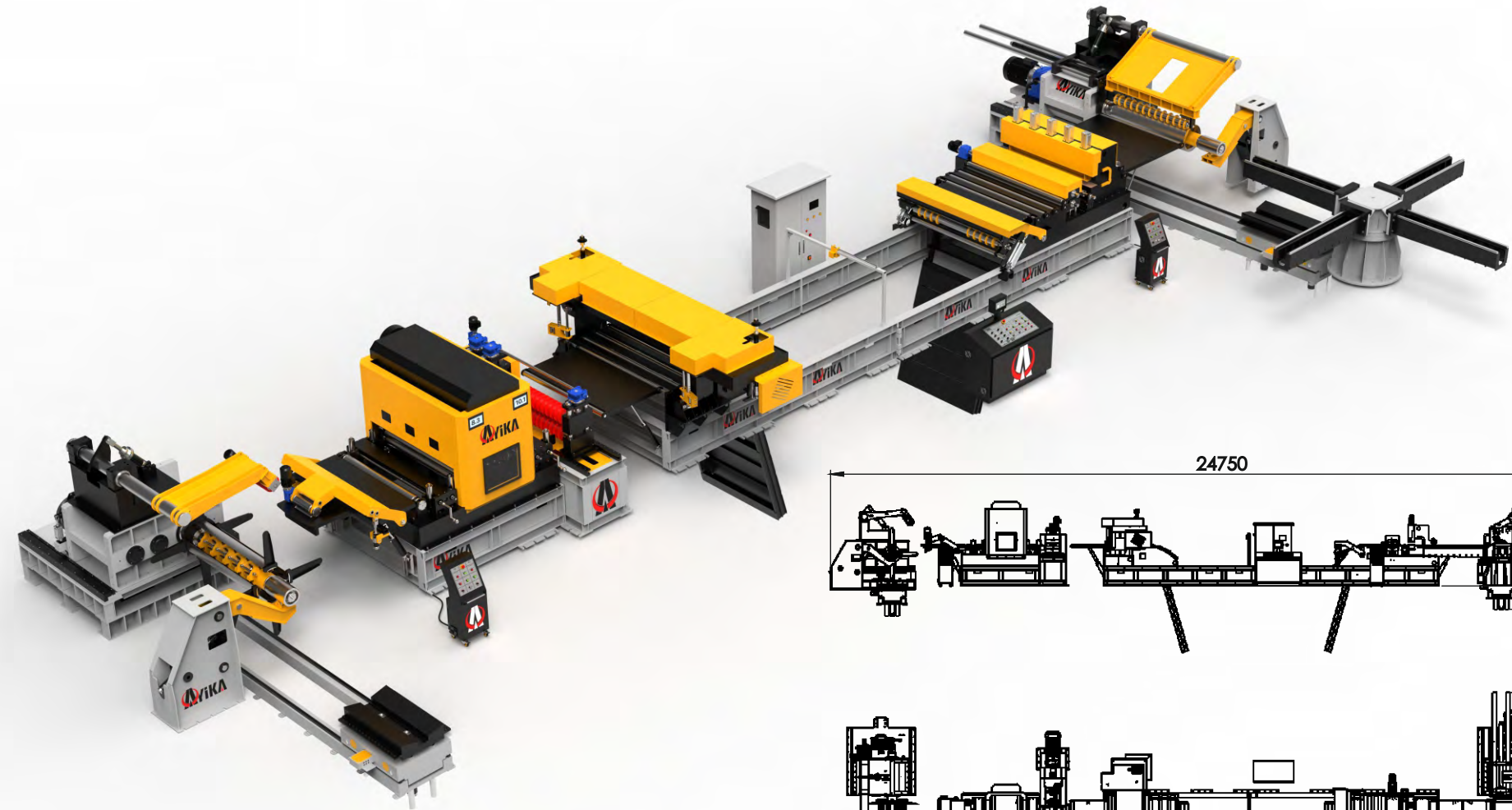
Recoiler:

The recoiler unit, which ensures that the slitted sheets are rewound into rolls in a regular and tight manner, enables the efficient completion of the production line with its automatic winding control and robust structure.



Scan the QR code to watch the video.

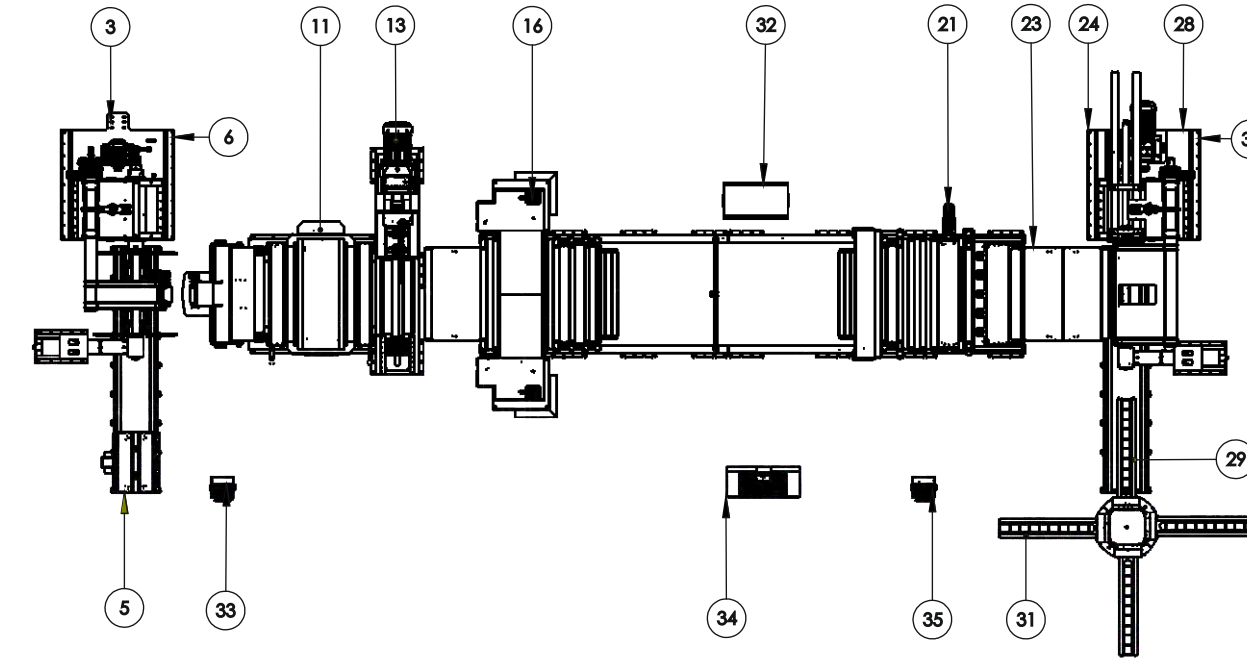
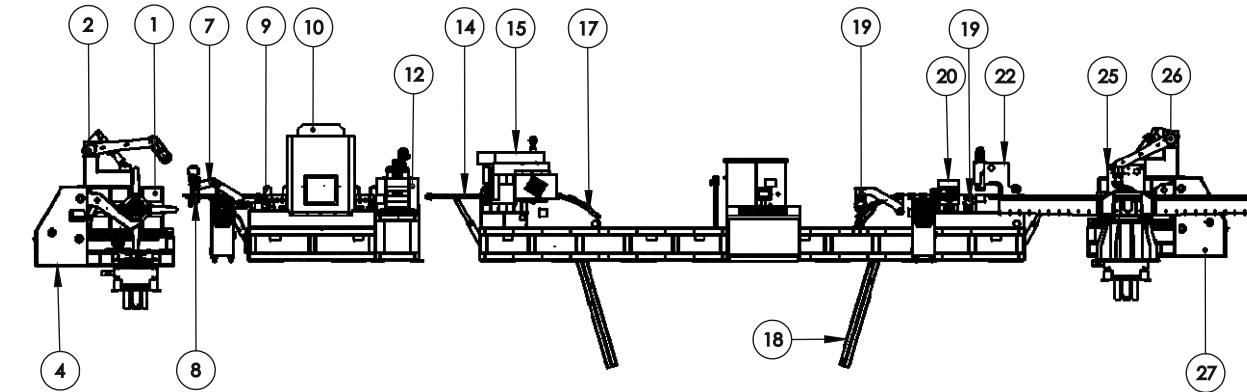
	Coil Width	Strip Thickness	Coil Weight	Entry Coil I.D.	Entry Coil O.D.	Line Speed	Number of Slitting
Min.							
Max.							



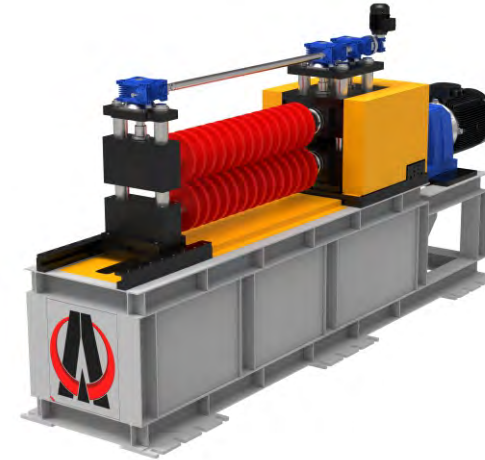
Sheet Thickness	Iron	Stainless Steel	Aluminum
0,5mm	20 pcs	18 pcs	25 pcs
1mm	16 pcs	12 pcs	20 pcs
2mm	14 pcs	8 pcs	18 pcs
3mm	12 pcs	6 pcs	16 pcs
4mm	8 pcs	-	12 pcs

Maximum number of cuts depending on material type.

Layout plans and concrete foundation dimensions must be prepared prior to installation.



No	Part Information	Part Notes
1	Hydraulic Decoller	20 Tons 1500 mm Ø480-Ø530 11 kW Asynchronous Motor / Max. Coil Ø2000
2	Hydraulic Snubber Arm	0.75 kW Asynchronous Motor Drive
3	Coil Centering	Hydraulic Piston System
4	Shaft Support	Hydraulic Piston System
5	Coil Car	Gear-Driven / Hydraulic Piston System
6	Decoller Hydraulic Unit	80 Liters / 5.5 kW Asynchronous Motor Drive
7	Peeler	0.75 kW Motorized Drive
8	Entry Feeding Shovel	Forward - Backward 400 mm Stroke Up - Down / Hydraulic System
9	Entry Guiding Rollers	Mechanical System
10	Feeder	Ø135 x 4 Drive Units / Ø90 x 7 Leveling Units / Ø90 x 27 Support Units = 38 Rolls Hydraulic Straightening System
11	Feeder Motor	PN1902 - 15 kW Motor- Driven Gear Transmission System
12	Slitting Head	Interchangeable Blade System
13	Slitting Head Motor	75 kW Asynchronous Main Motor / 0.55 kW Blade Adjustment Motor
14	Scrap Recoiler Entry Shovel	Hydraulic Piston System
15	Scrap Recoiler	2.2 kW Asynchronous Motor Drive
16	Scrap Recoiler	Hydraulic Piston Open/Close System
17	Loop / Pit Oscillation Rollers	Mechanical System
18	Loop / Pit Shovels	Hydraulic Piston System
19	Separator Before Tensioner	Adjustable Mechanical System
20	Tensioner Pinch Rollers	Ø195 x 2 Rollers - 1500 mm Width
21	Pinch Rollers Motor	2.2 kW Asynchronous Motor Drive
22	Tensioner Body	Pneumatic Piston Press System
23	Tensioner Exit Shovel	Hydraulic Piston System
24	Hydraulic Recoiler	20 Tons 1500 mm Ø530 55 kW Asynchronous Motor / Max. Coil Ø2000
25	Coil Pusher	Hydraulic System
26	Recoiler Separator	Adjustable Hydraulic System
27	Shaft Support	Hydraulic Piston System
28	Coil Centering	Hydraulic Piston System
29	Exit Coil Car	Gear-Driven / Hydraulic Piston System
30	Recoiler Hydraulic Unit	80 Liters Hydraulic Power Unit with 5.5 kW Asynchronous Motor
31	Coil Turnstile	3 kW Asynchronous Motor-Driven
32	Electrical Control Panel	
33	Control Panel	Hydraulic Decoller & Leveler
34	Control Panel	Main Control Panel
35	Control Panel	Hydraulic Recoiler Control & Tensioner

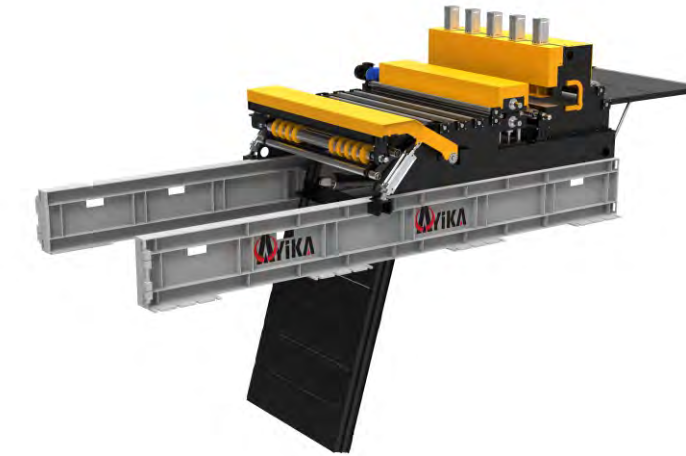


General Specifications	Decoiler
Total Motor Power (kW)	18(kW)
Max. Speed	Braking System
Sheet Thickness	0.5 - 4 mm
Max. Coil Width	1500 mm
Coil Weight Capacity	20 Ton
Coil Inner Diameter	480-530 mm
Coil Outer Diameter	2000 mm

General Specifications	Leveler
Total Motor Power (kW)	16 (kW)
Max. Speed	40 m/max.
Sheet Thickness	0.5 - 4 mm
Max. Coil Width	1500 mm
Pinch Rollers' Quantity	4
Pinch Rollers' Diameter	135 mm
Leveler Rollers' Quantity	7
Leveler Rollers' Diameter	90 mm
Backup Rollers' Quantity	27
Backup Rollers' Diameter	90 mm

General Specifications	Slitting
Total Motor Power (kW)	81 (kW)
Max. Speed	75 m/max.
Sheet Thickness	0.5 - 4 mm
Max. Coil Width	1500 mm

Desired speed and power values may vary according to the specific order.

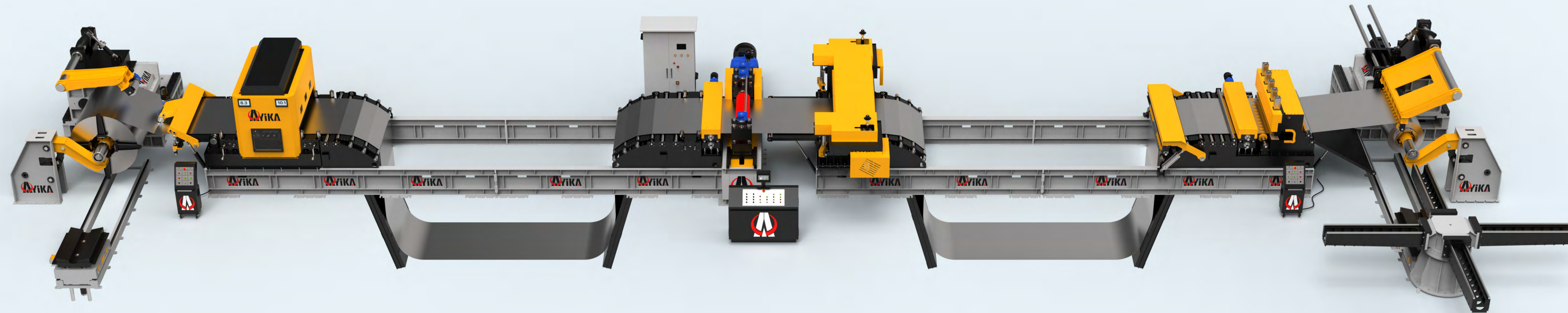


General Specifications	Scrap Recoiler
Total Motor Power (kW)	4,4 (kW)
Max. Speed	40 m/max.
Sheet Thickness	0.5 - 4 mm
Maximum Scrap Width	5 - 30 mm
Max. Coil Weight Capacity	100 kg

General Specifications	Sheet Tensioner
Total Motor Power (kW)	2,2 (kW)
Driver Roller Quantity	2
Driving Roller Diameter	195 mm
Sheet Thickness	0.5 - 4 mm
Max. Coil Width	1500 mm

General Specifications	Recoiler
Total Motor Power (kW)	64 (kW)
Min. / Max. Speed	50 m/min. - 145 m/max.
Sheet Thickness	0.5 - 4 mm
Max. Coil Width	1500 mm
Coil Weight Capacity	20 Ton
Coil Inner Diameter	508 mm
Coil Outer Diameter	2000 mm

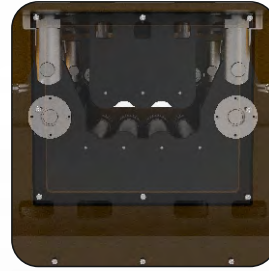
Desired speed and power values may vary according to the specific order.





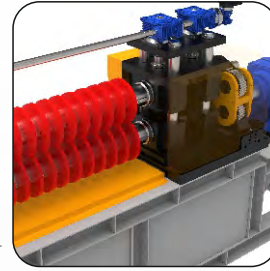
20-Ton Decoiler:

Designed for heavy-tonnage metal coils with its high-strength steel body and powerful gearbox system, the 20-ton decoiler operates with hydraulic mandrel clamping and expansion, providing safe handling and long service life. It is an ideal solution for industrial production lines.



Leveler Unit:

Designed to ensure that the sheet metal uncoiled from the roll advances through the production line smoothly and without tension, the straightening unit prevents loss of form by removing slight twists and curls in the material, providing an ideal starting point for high-precision operations.



Slitting Unit:

It is a critical process unit that separates the main coil into strips of desired widths with high precision, increasing production efficiency through its cutting quality and dimensional repeatability.



Scrap Recoiler Unit:

An auxiliary unit that winds edge scraps generated during the slitting process in a safe and controlled manner, ensuring the line operates cleanly, continuously, and in compliance with operator safety standards.



Sheet Tensioner:

An integrated press and tensioning unit that provides tension control throughout the line while ensuring the sheet is formed into the desired shape; it offers a compact and efficient solution for high-precision operations. By maintaining material stability, it increases both quality and production speed.

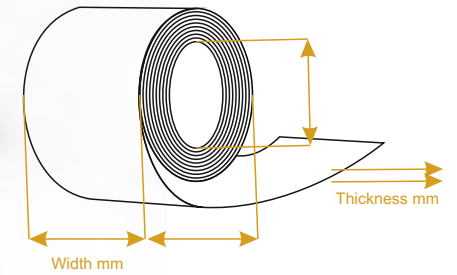


Recoiler:

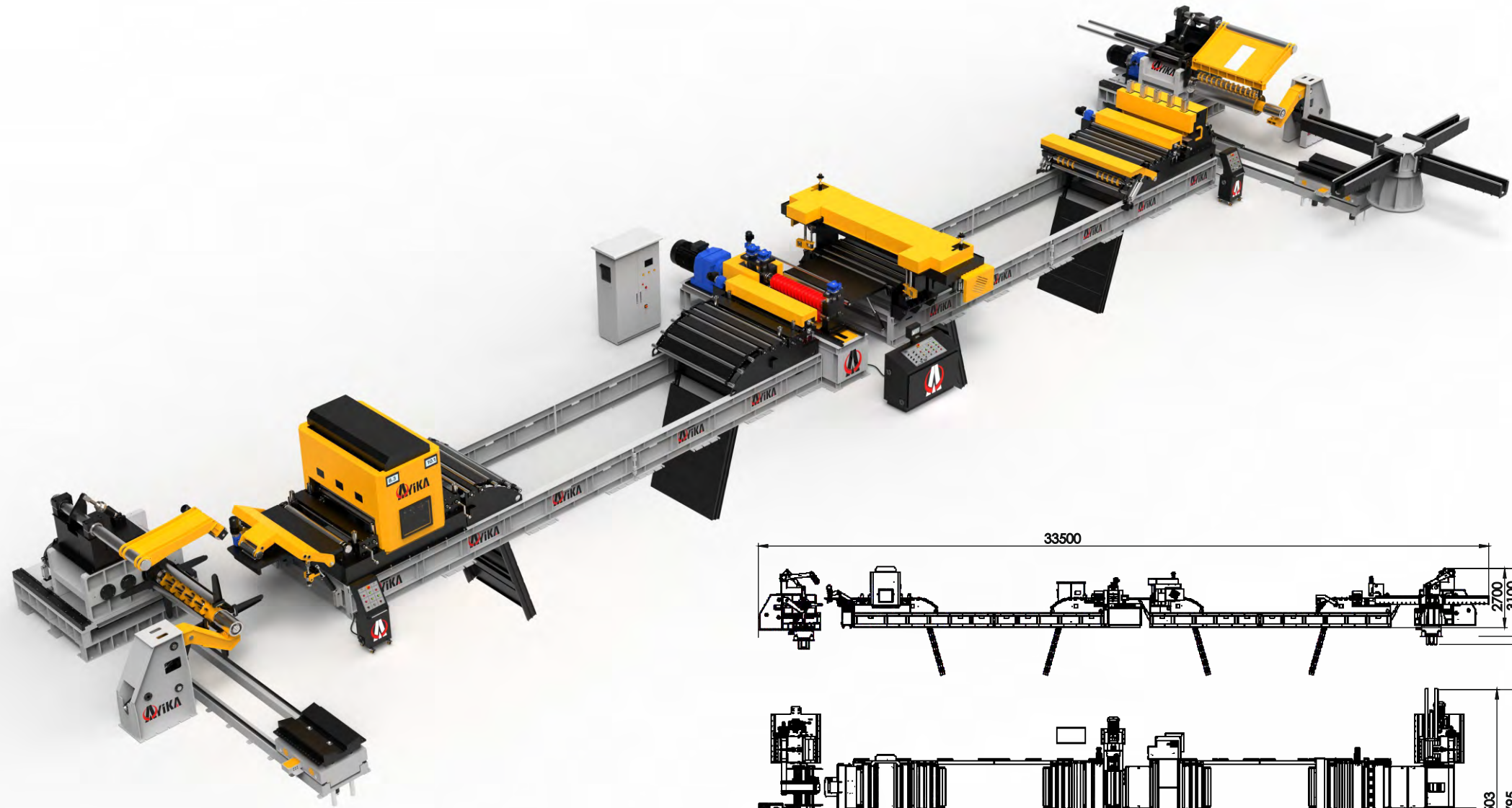
The recoiler unit, which ensures that the slitted sheets are rewound into rolls in a regular and tight manner, enables the efficient completion of the production line with its automatic winding control and robust structure.



Scan the QR code to watch the video.



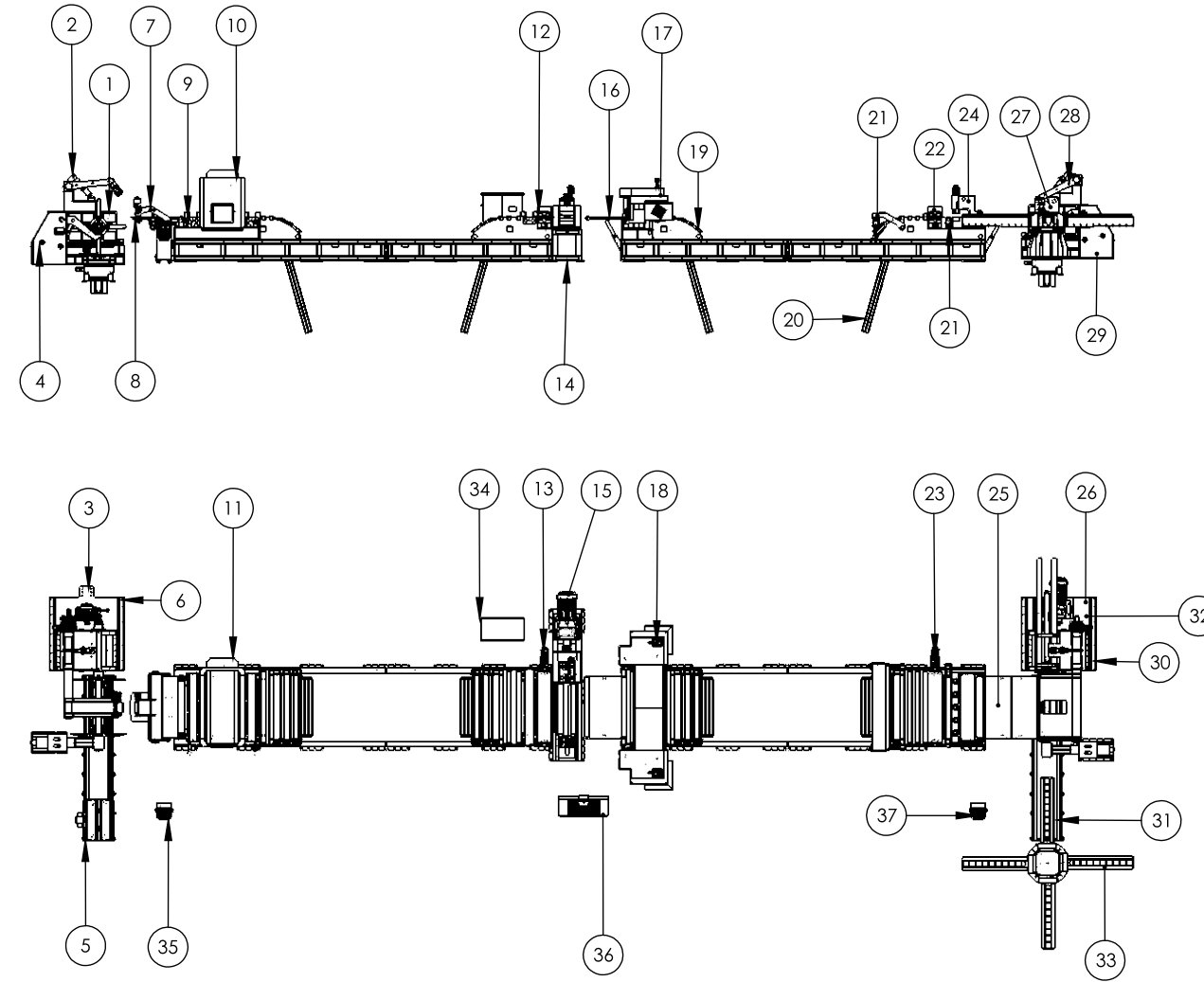
	Coil Width	Strip Thickness	Coil Weight	Entry Coil I.D.	Entry Coil O.D.	Line Speed	Number of Slitting
Min.							
Max.							



Sheet Thickness	Iron	Stainless Steel	Aluminum
0,5mm	20 pcs	18 pcs	25 pcs
1mm	16 pcs	12 pcs	20 pcs
2mm	14 pcs	8 pcs	18 pcs
3mm	12 pcs	6 pcs	16 pcs
4mm	8 pcs	-	12 pcs

Maximum number of cuts depending on material type.

Layout plans and concrete foundation dimensions must be prepared prior to installation.



No	Part Information	Part Notes
1	Hydraulic Decoiler	20 Tons 1500 mm Ø480-Ø530 11 kW Asynchronous Motor / Max. Coil Ø2000
2	Hydraulic Snubber Arm	0.75 kW Asynchronous Motor Drive
3	Coil Centering	Hydraulic Piston System
4	Shaft Support	Hydraulic Piston System
5	Coil Car	Gear-Driven / Hydraulic Piston System
6	Decoiler Hydraulic Unit	80 Liters / 5.5 kW Asynchronous Motor Drive
7	Peeler	0.75 kW Motorized Drive
8	Entry Feeding Shovel	Forward - Backward 400 mm Stroke Up - Down / Hydraulic System
9	Entry Guiding Rollers	Mechanical System
10	Feeder	Ø135 x 4 Drive Units / Ø90 x 7 Leveling Units / Ø90 x 27 Support Units = 38 Rolls Hydraulic Straightening System
11	Feeder Motor	PN1902 - 15 kW Motor- Driven Gear Transmission System
12	Slitter Entry Bridle	Ø195 x 2 Rollers - 1500 mm Width
13	Slitter Entry Pull Motor	2.2 kW Asynchronous Motor Drive
14	Slitting Head	Interchangeable Blade System
15	Slitting Head Motor	75 kW Asynchronous Main Motor / 0.55 kW Blade Adjustment Motor
16	Scrap Recoiler Entry Shovel	Hydraulic Piston System
17	Scrap Recoiler	2.2 kW Asynchronous Motor Drive
18	Scrap Recoiler	Hydraulic Piston Open/Close System
19	Loop / Pit Oscillation Rollers	Mechanical System
20	Loop / Pit Shovels	Hydraulic Piston System
21	Separator Before Tensioner	Adjustable Mechanical System
22	Tensioner Pinch Rollers	Ø195 x 2 Rollers - 1500 mm Width
23	Pinch Rollers Motor	2.2 kW Asynchronous Motor Drive
24	Tensioner Body	Pneumatic Piston Press System
25	Tensioner Exit Shovel	Hydraulic Piston System
26	Hydraulic Recoiler	20 Tons 1500 mm Ø530 55 kW Asynchronous Motor / Max. Coil Ø2000
27	Coil Pusher	Hydraulic System
28	Recoiler Separator	Adjustable Hydraulic System
29	Shaft Support	Hydraulic Piston System
30	Coil Centering	Hydraulic Piston System
31	Exit Coil Car	Gear-Driven / Hydraulic Piston System
32	Recoiler Hydraulic Unit	80 Liters Hydraulic Power Unit with 5.5 kW Asynchronous Motor
33	Coil Turnstile	5,5 kW Asynchronous Motor-Driven
34	Electrical Control Panel	
35	Control Panel	Hydraulic Decoiler & Leveler
36	Control Panel	Main Control Panel
37	Control Panel	Hydraulic Recoiler Control & Tensioner



General Specifications	Decoiler
Total Motor Power (kW)	18 (kW)
Max. Speed	Braking System
Sheet Thickness	0.5 - 4 mm
Max. Coil Width	1500 mm
Coil Weight Capacity	20 Ton
Coil Inner Diameter	480-530 mm
Coil Outer Diameter	2000 mm

General Specifications	Leveler
Total Motor Power (kW)	16 (kW)
Max. Speed	40 m/max.
Sheet Thickness	0.5 - 4 mm
Max. Coil Width	1500 mm
Pinch Rollers' Quantity	4
Pinch Rollers' Diameter	135 mm
Leveler Rollers' Quantity	7
Leveler Rollers' Diameter	90 mm
Backup Rollers' Quantity	27
Backup Rollers' Diameter	90 mm

General Specifications	Slitting
Total Motor Power (kW)	83 (kW)
Max. Speed	75 m/max.
Sheet Thickness	0.5 - 4 mm
Max. Coil Width	1500 mm
Driver Roller Quantity	2
Driving Roller Diameter	195 mm

Desired speed and power values may vary according to the specific order.



General Specifications	Scrap Recoiler
Total Motor Power (kW)	4,4 (kW)
Max. Speed	40 m/max.
Sheet Thickness	0.5 - 4 mm
Maximum Scrap Width	5 - 30 mm
Max. Coil Weight Capacity	100 kg

General Specifications	Sheet Tensioner
Total Motor Power (kW)	2,2 (kW)
Driver Roller Quantity	2
Driving Roller Diameter	195 mm
Sheet Thickness	0.5 - 3 mm
Max. Coil Width	1500 mm

General Specifications	Recoiler
Total Motor Power (kW)	64 (kW)
Min. / Max. Speed	50 m/min. - 145 m/max.
Sheet Thickness	0.5 - 3 mm
Max. Coil Width	1500 mm
Coil Weight Capacity	20 Ton
Coil Inner Diameter	508 mm
Coil Outer Diameter	2000 mm

Desired speed and power values may vary according to the specific order.